

Local Market Update – February 2013

A RESEARCH TOOL PROVIDED BY THE REALTOR® ASSOCIATION OF THE SIOUX EMPIRE, INC.



Dell Rapids

+ 25.0%

Change in
New Listings

- 66.7%

Change in
Closed Sales

+ 60.4%

Change in
Median Sales Price

Minnehaha County, SD

February

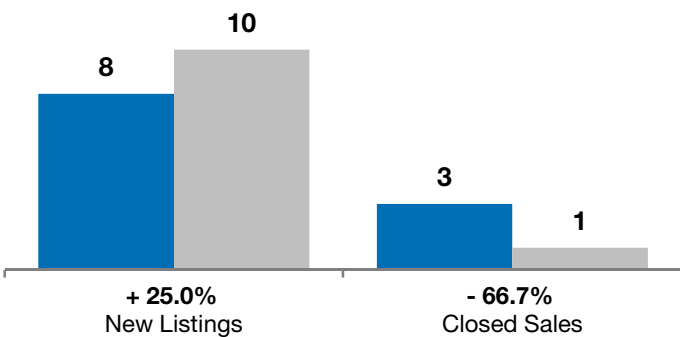
Year to Date

	2012	2013	+ / -	2012	2013	+ / -
New Listings	8	10	+ 25.0%	10	12	+ 20.0%
Closed Sales	3	1	- 66.7%	4	5	+ 25.0%
Median Sales Price*	\$120,000	\$192,500	+ 60.4%	\$173,000	\$190,000	+ 9.8%
Average Sales Price*	\$137,000	\$192,500	+ 40.5%	\$185,250	\$183,380	- 1.0%
Percent of Original List Price Received*	85.7%	96.7%	+ 12.9%	87.2%	93.5%	+ 7.2%
Average Days on Market Until Sale	106	149	+ 41.0%	142	121	- 14.6%
Inventory of Homes for Sale	44	34	- 22.7%	--	--	--
Months Supply of Inventory	11.3	5.8	- 48.2%	--	--	--

* Does not account for list prices from any previous listing contracts or seller concessions. | Activity for one month can sometimes look extreme due to small sample size.

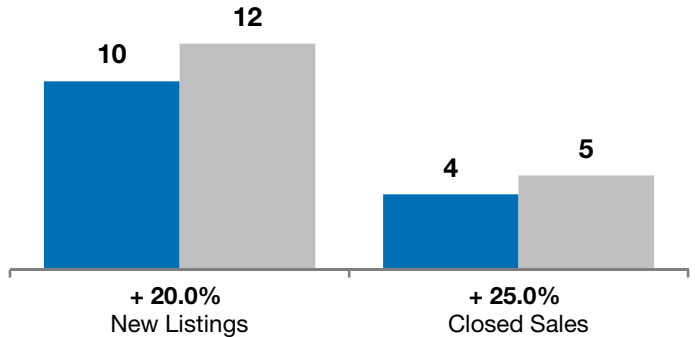
February

■ 2012 ■ 2013

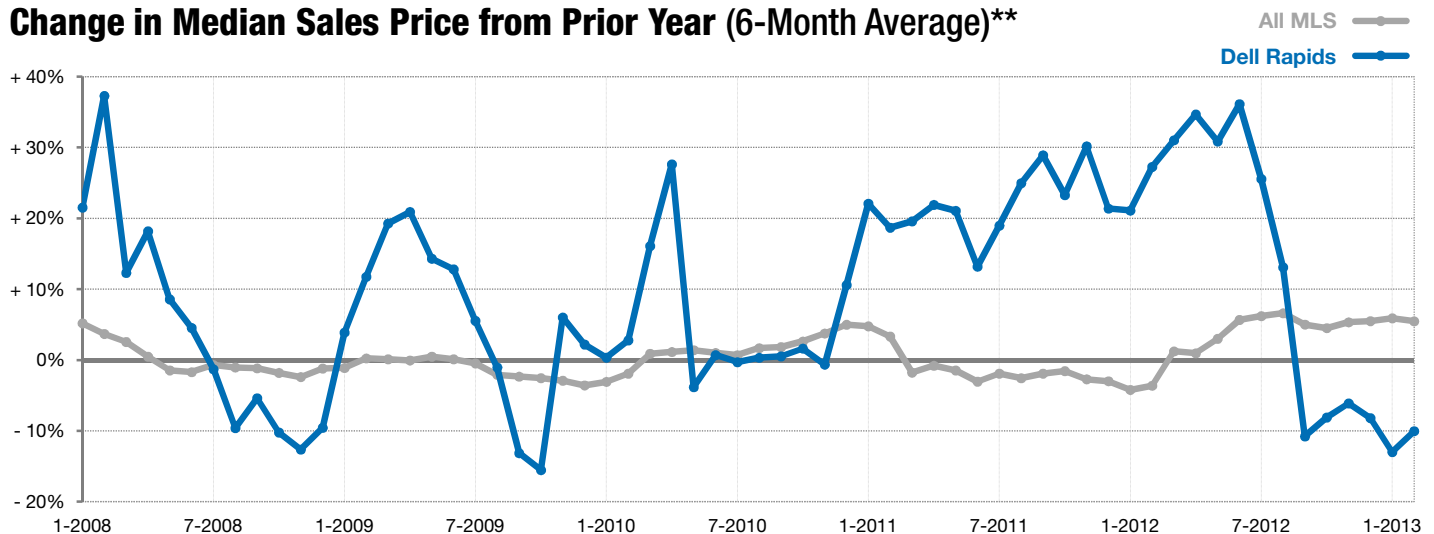


Year to Date

■ 2012 ■ 2013



Change in Median Sales Price from Prior Year (6-Month Average)**



** Each dot represents the change in median sales price from the prior year using a 6-month weighted average. This means that each of the 6 months used in a dot are proportioned according to their share of sales during that period. | Current as of March 6, 2013. All data from RASE Multiple Listing Service. | Powered by 10K Research and Marketing.