

Local Market Update – February 2013

A RESEARCH TOOL PROVIDED BY THE REALTOR® ASSOCIATION OF THE SIOUX EMPIRE, INC.



Garretson

0.0%

Change in
New Listings

0.0%

Change in
Closed Sales

+ 153.2%

Change in
Median Sales Price

Minnehaha County, SD

February

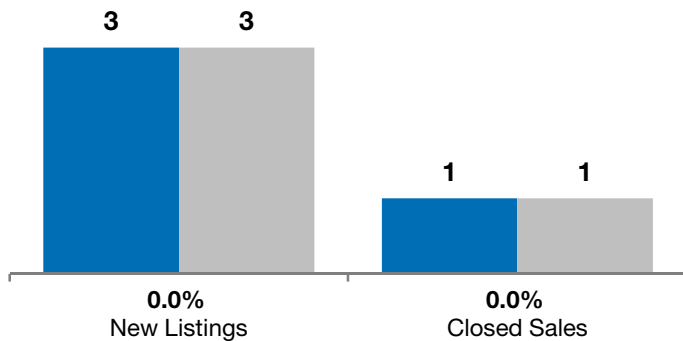
Year to Date

	2012	2013	+ / -	2012	2013	+ / -
New Listings	3	3	0.0%	4	6	+ 50.0%
Closed Sales	1	1	0.0%	2	1	- 50.0%
Median Sales Price*	\$39,500	\$100,000	+ 153.2%	\$164,750	\$100,000	- 39.3%
Average Sales Price*	\$39,500	\$100,000	+ 153.2%	\$164,750	\$100,000	- 39.3%
Percent of Original List Price Received*	63.2%	91.7%	+ 45.2%	79.9%	91.7%	+ 14.8%
Average Days on Market Until Sale	99	84	- 15.2%	85	84	- 1.2%
Inventory of Homes for Sale	15	10	- 33.3%	--	--	--
Months Supply of Inventory	7.5	4.2	- 43.6%	--	--	--

* Does not account for list prices from any previous listing contracts or seller concessions. | Activity for one month can sometimes look extreme due to small sample size.

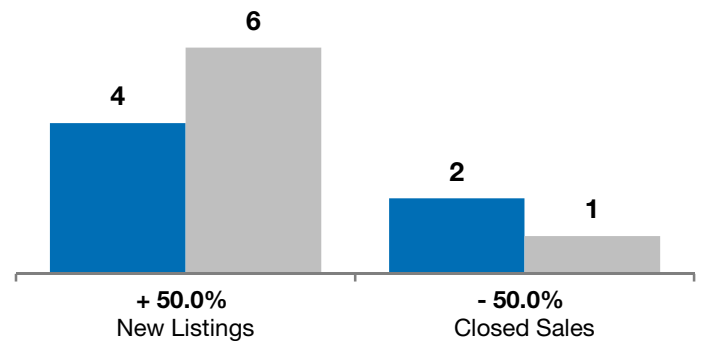
February

■ 2012 ■ 2013

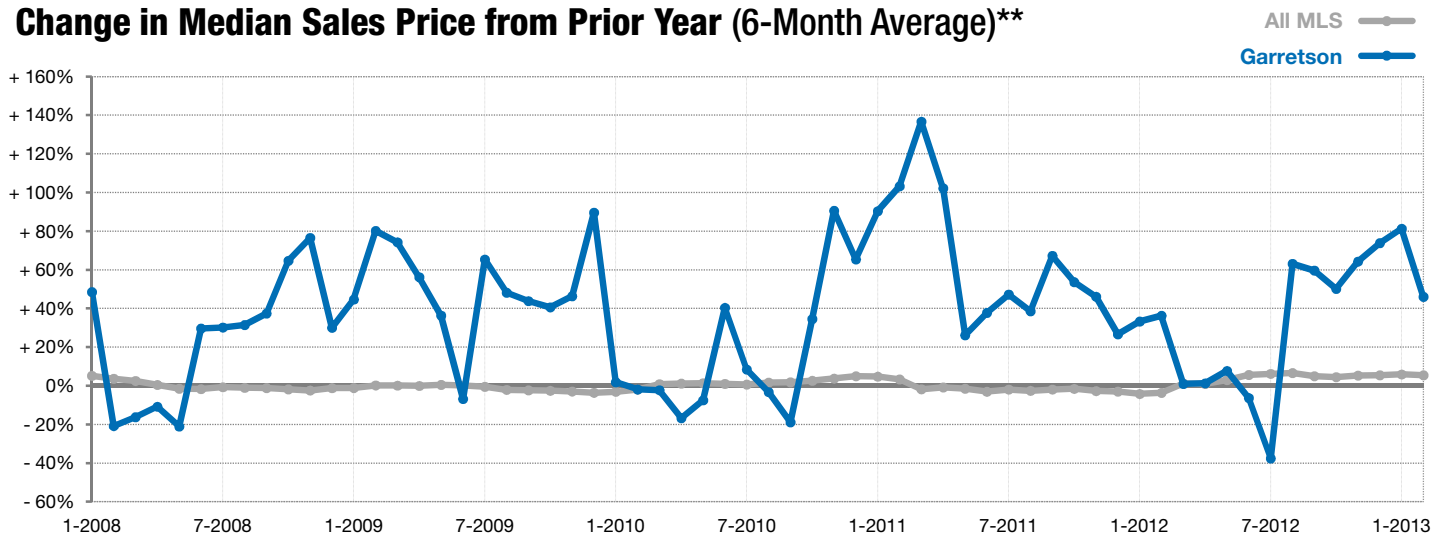


Year to Date

■ 2012 ■ 2013



Change in Median Sales Price from Prior Year (6-Month Average)**



** Each dot represents the change in median sales price from the prior year using a 6-month weighted average. This means that each of the 6 months used in a dot are proportioned according to their share of sales during that period. | Current as of March 6, 2013. All data from RASE Multiple Listing Service. | Powered by 10K Research and Marketing.