

Local Market Update – February 2014

A RESEARCH TOOL PROVIDED BY THE REALTOR® ASSOCIATION OF THE SIOUX EMPIRE, INC.



Tea

- 50.0%

--

--

Change in
New Listings

Change in
Closed Sales

Change in
Median Sales Price

Lincoln County, SD

February

Year to Date

	2013	2014	+ / -	2013	2014	+ / -
New Listings	16	8	- 50.0%	25	16	- 36.0%
Closed Sales	0	4	--	5	9	+ 80.0%
Median Sales Price*	\$0	\$158,150	--	\$178,000	\$184,900	+ 3.9%
Average Sales Price*	\$0	\$154,450	--	\$176,780	\$186,111	+ 5.3%
Percent of Original List Price Received*	0.0%	98.0%	--	98.4%	97.7%	- 0.8%
Average Days on Market Until Sale	0	80	--	35	78	+ 122.5%
Inventory of Homes for Sale	29	31	+ 6.9%	--	--	--
Months Supply of Inventory	4.5	4.4	- 3.2%	--	--	--

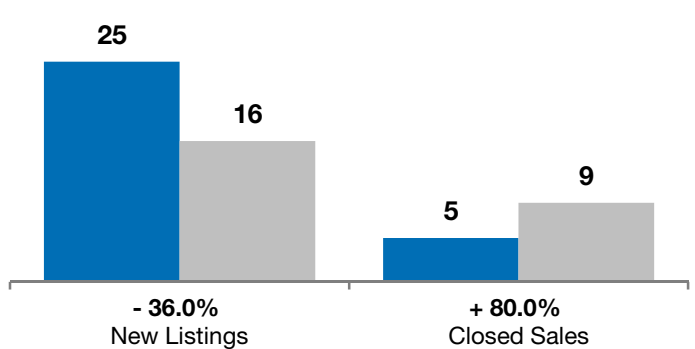
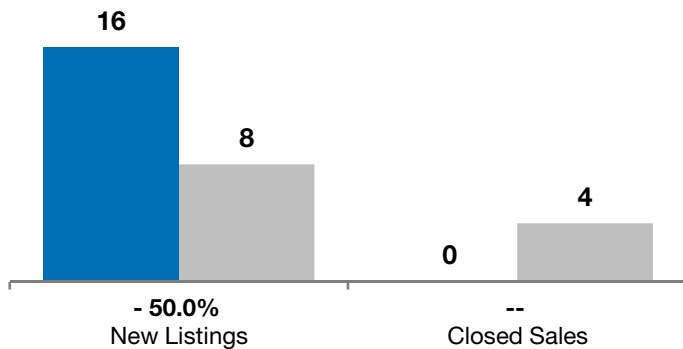
* Does not account for list prices from any previous listing contracts or seller concessions. | Activity for one month can sometimes look extreme due to small sample size.

February

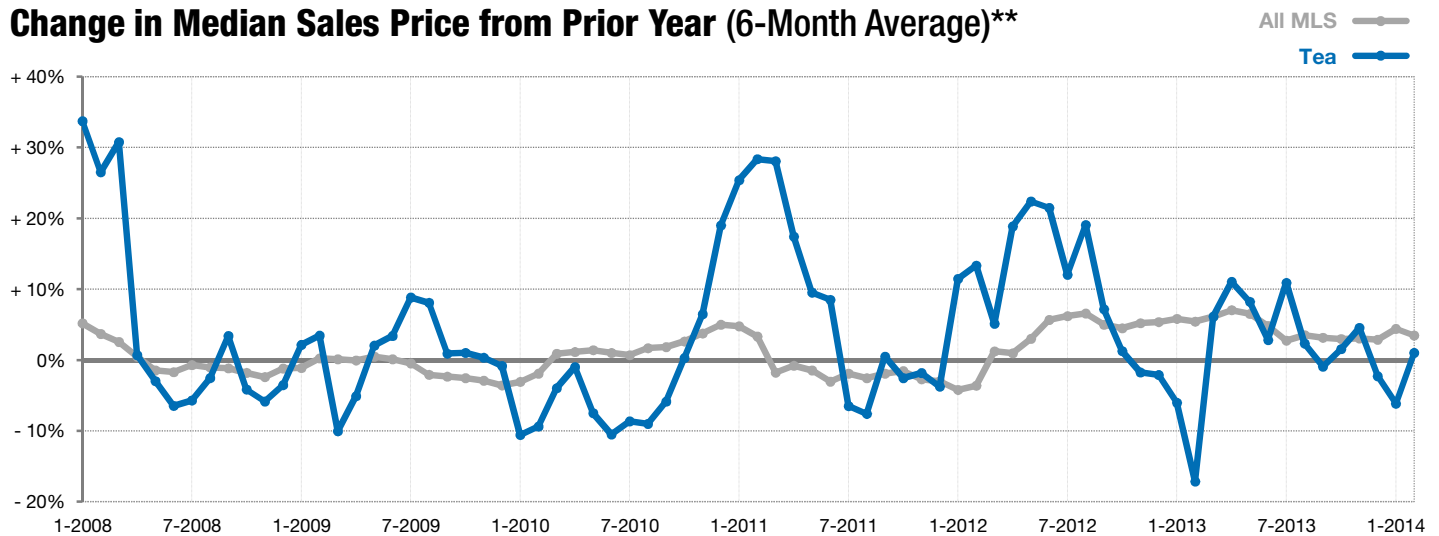
■ 2013 ■ 2014

Year to Date

■ 2013 ■ 2014



Change in Median Sales Price from Prior Year (6-Month Average)**



** Each dot represents the change in median sales price from the prior year using a 6-month weighted average. This means that each of the 6 months used in a dot are proportioned according to their share of sales during that period. | Current as of March 6, 2014. All data from RASE Multiple Listing Service. | Powered by 10K Research and Marketing.