

# Local Market Update – April 2014

A RESEARCH TOOL PROVIDED BY THE REALTOR® ASSOCIATION OF THE SIOUX EMPIRE, INC.



## Tea

**0.0%**

Change in  
New Listings

**+ 166.7%**

Change in  
Closed Sales

**+ 20.8%**

Change in  
Median Sales Price

Lincoln County, SD

**April**

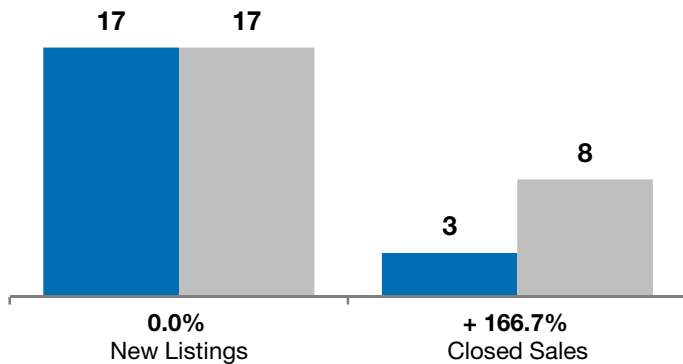
**Year to Date**

	2013	2014	+ / -	2013	2014	+ / -
New Listings	17	17	0.0%	56	49	- 12.5%
Closed Sales	3	8	+ 166.7%	14	22	+ 57.1%
Median Sales Price*	\$184,500	<b>\$222,913</b>	+ 20.8%	\$190,750	<b>\$186,450</b>	- 2.3%
Average Sales Price*	\$175,967	<b>\$233,114</b>	+ 32.5%	\$183,421	<b>\$199,042</b>	+ 8.5%
Percent of Original List Price Received*	96.7%	<b>101.9%</b>	+ 5.3%	97.8%	<b>99.5%</b>	+ 1.7%
Average Days on Market Until Sale	64	91	+ 41.1%	76	88	+ 15.8%
Inventory of Homes for Sale	41	44	+ 7.3%	--	--	--
Months Supply of Inventory	0.0	0.0	--	--	--	--

\* Does not account for list prices from any previous listing contracts or seller concessions. | Activity for one month can sometimes look extreme due to small sample size.

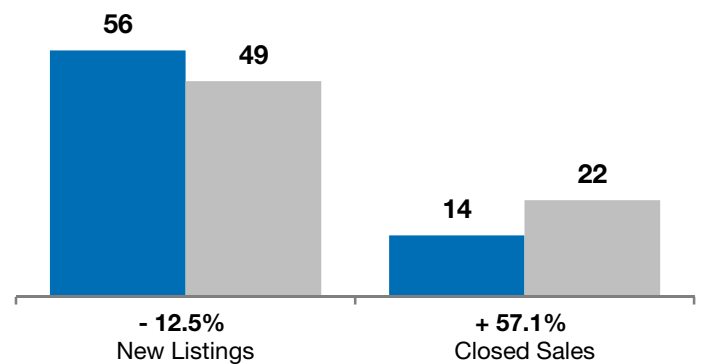
**April**

■ 2013 ■ 2014

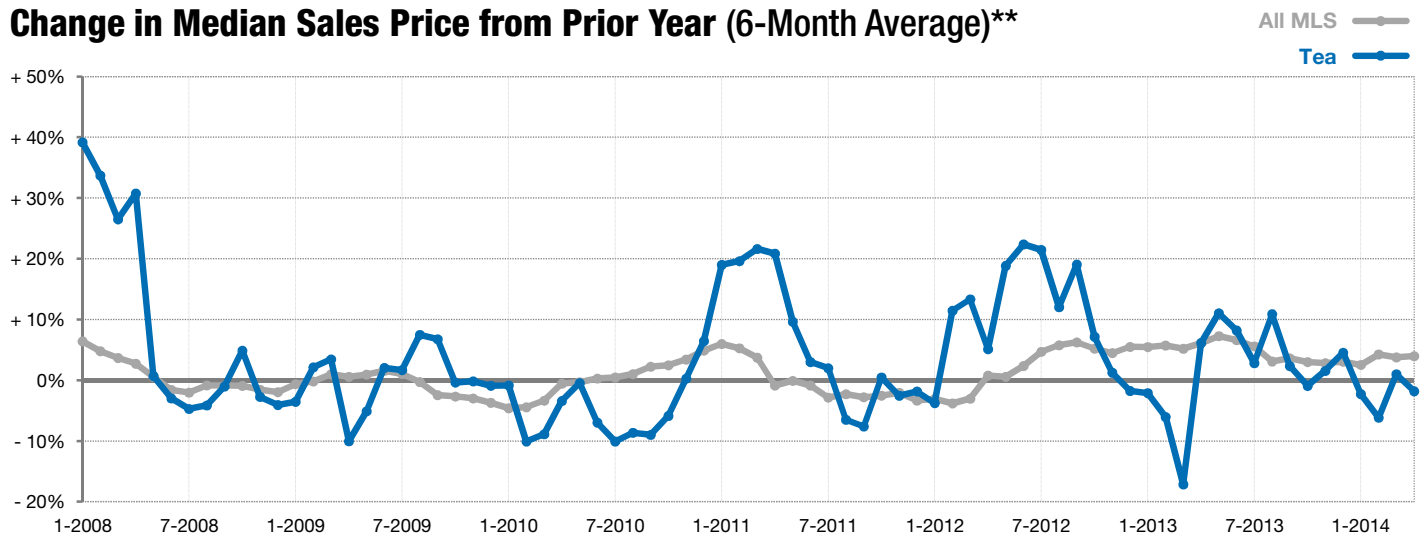


**Year to Date**

■ 2013 ■ 2014



### Change in Median Sales Price from Prior Year (6-Month Average)\*\*



\*\* Each dot represents the change in median sales price from the prior year using a 6-month weighted average. This means that each of the 6 months used in a dot are proportioned according to their share of sales during that period. | Current as of May 9, 2014. All data from RASE Multiple Listing Service. | Powered by 10K Research and Marketing.