

Local Market Update – June 2014

A RESEARCH TOOL PROVIDED BY THE REALTOR® ASSOCIATION OF THE SIOUX EMPIRE, INC.



Tea

+ 18.2%

Change in
New Listings

+ 50.0%

Change in
Closed Sales

+ 11.5%

Change in
Median Sales Price

Lincoln County, SD

June

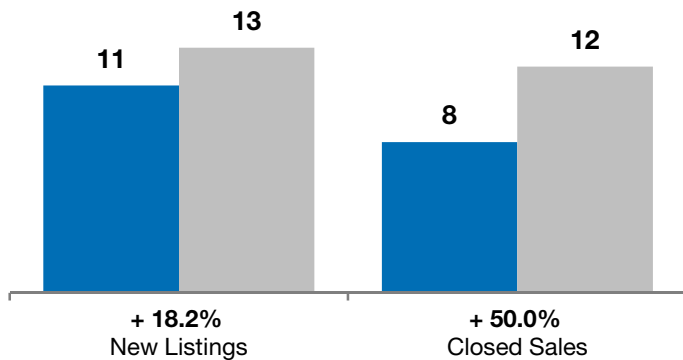
Year to Date

	2013	2014	+ / -	2013	2014	+ / -
New Listings	11	13	+ 18.2%	80	73	- 8.8%
Closed Sales	8	12	+ 50.0%	26	51	+ 96.2%
Median Sales Price*	\$173,505	\$193,500	+ 11.5%	\$186,750	\$180,000	- 3.6%
Average Sales Price*	\$174,976	\$199,825	+ 14.2%	\$181,273	\$191,444	+ 5.6%
Percent of Original List Price Received*	97.8%	97.7%	- 0.1%	98.0%	98.7%	+ 0.7%
Average Days on Market Until Sale	75	119	+ 59.1%	72	102	+ 41.3%
Inventory of Homes for Sale	37	25	- 32.4%	--	--	--
Months Supply of Inventory	0.0	0.0	--	--	--	--

* Does not account for list prices from any previous listing contracts or seller concessions. | Activity for one month can sometimes look extreme due to small sample size.

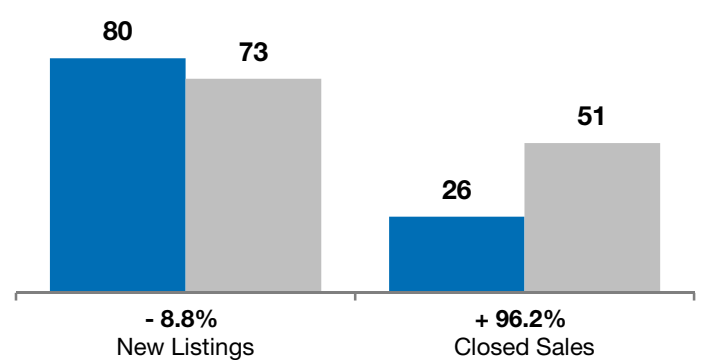
June

■ 2013 ■ 2014

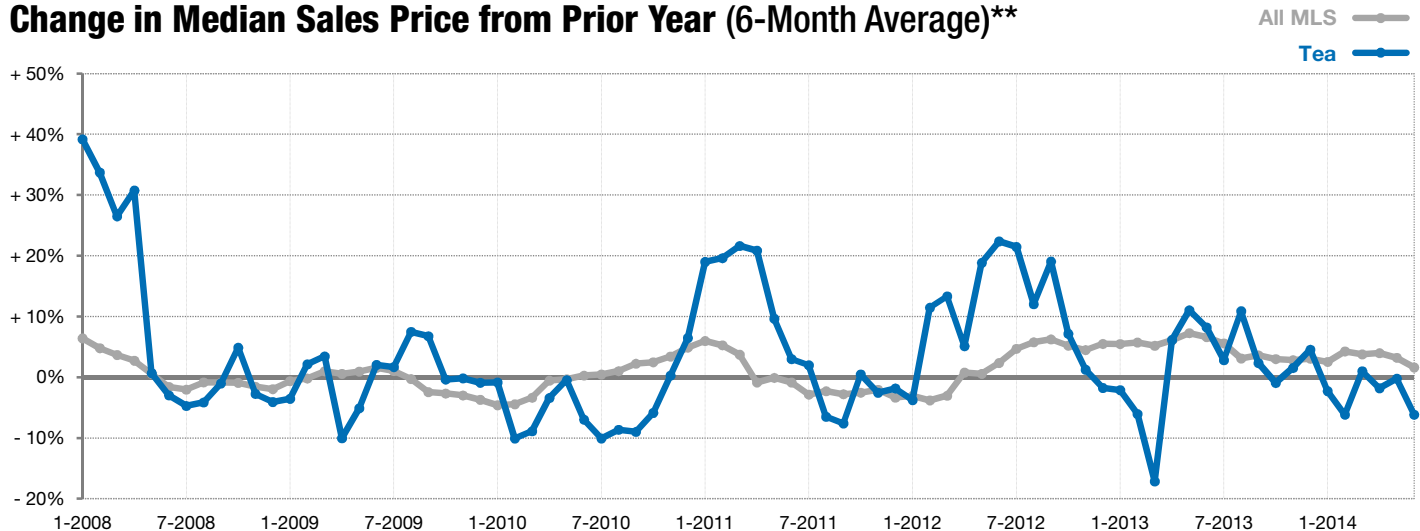


Year to Date

■ 2013 ■ 2014



Change in Median Sales Price from Prior Year (6-Month Average)**



** Each dot represents the change in median sales price from the prior year using a 6-month weighted average. This means that each of the 6 months used in a dot are proportioned according to their share of sales during that period. | Current as of July 7, 2014. All data from RASE Multiple Listing Service. | Powered by 10K Research and Marketing.