

Local Market Update – October 2014

A RESEARCH TOOL PROVIDED BY THE REALTOR® ASSOCIATION OF THE SIOUX EMPIRE, INC.



Tea

Lincoln County, SD

- 16.7%

Change in
New Listings

+ 50.0%

Change in
Closed Sales

+ 0.6%

Change in
Median Sales Price

October

Year to Date

	2013	2014	+ / -	2013	2014	+ / -
New Listings	12	10	- 16.7%	129	114	- 11.6%
Closed Sales	4	6	+ 50.0%	65	85	+ 30.8%
Median Sales Price*	\$182,950	\$184,000	+ 0.6%	\$184,000	\$188,000	+ 2.2%
Average Sales Price*	\$181,350	\$185,635	+ 2.4%	\$191,118	\$193,250	+ 1.1%
Percent of Original List Price Received*	98.7%	96.8%	- 2.0%	98.5%	98.9%	+ 0.4%
Average Days on Market Until Sale	77	85	+ 10.9%	84	97	+ 16.1%
Inventory of Homes for Sale	35	26	- 25.7%	--	--	--
Months Supply of Inventory	5.5	3.3	- 40.6%	--	--	--

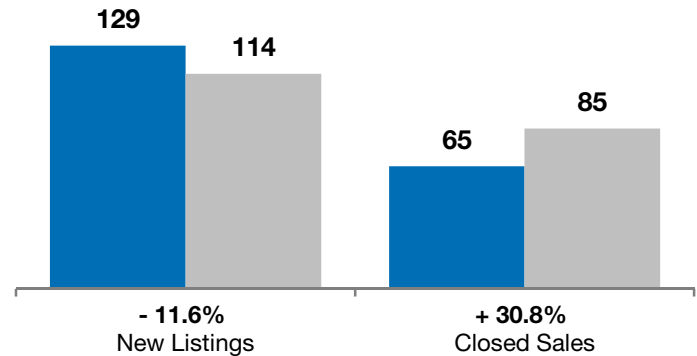
* Does not account for list prices from any previous listing contracts or seller concessions. | Activity for one month can sometimes look extreme due to small sample size.

September

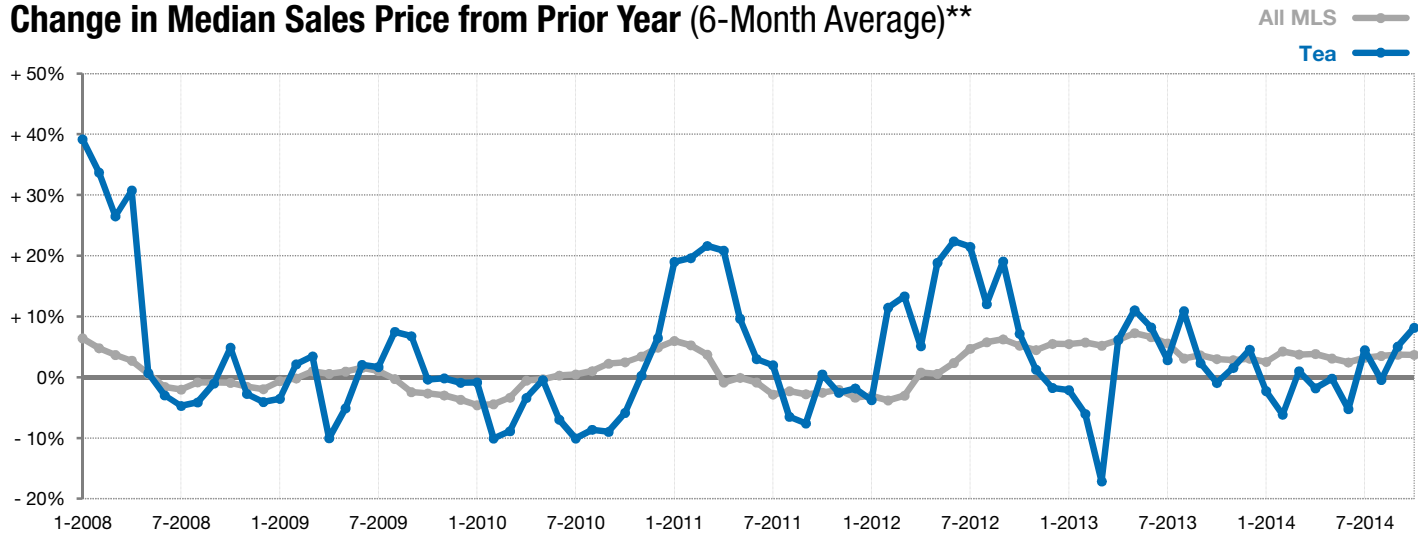
■ 2013 ■ 2014

Year to Date

■ 2013 ■ 2014



Change in Median Sales Price from Prior Year (6-Month Average)**



** Each dot represents the change in median sales price from the prior year using a 6-month weighted average. This means that each of the 6 months used in a dot are proportioned according to their share of sales during that period. | Current as of November 6, 2014. All data from RASE Multiple Listing Service. | Powered by 10K Research and Marketing.