

Local Market Update – November 2014

A RESEARCH TOOL PROVIDED BY THE REALTOR® ASSOCIATION OF THE SIOUX EMPIRE, INC.



Tea

Lincoln County, SD

- 63.6%

Change in
New Listings

- 33.3%

Change in
Closed Sales

+ 12.4%

Change in
Median Sales Price

November

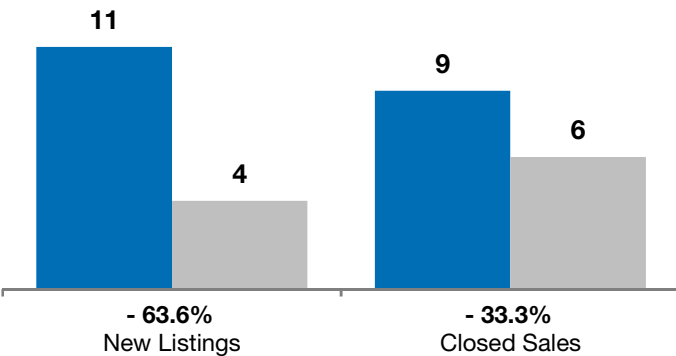
Year to Date

	2013	2014	+ / -	2013	2014	+ / -
New Listings	11	4	- 63.6%	140	118	- 15.7%
Closed Sales	9	6	- 33.3%	74	91	+ 23.0%
Median Sales Price*	\$167,000	\$187,750	+ 12.4%	\$176,500	\$188,000	+ 6.5%
Average Sales Price*	\$174,967	\$220,933	+ 26.3%	\$189,154	\$195,076	+ 3.1%
Percent of Original List Price Received*	99.6%	100.0%	+ 0.4%	98.6%	98.9%	+ 0.3%
Average Days on Market Until Sale	90	84	- 6.4%	85	96	+ 14.1%
Inventory of Homes for Sale	33	22	- 33.3%	--	--	--
Months Supply of Inventory	4.8	2.8	- 41.8%	--	--	--

* Does not account for list prices from any previous listing contracts or seller concessions. | Activity for one month can sometimes look extreme due to small sample size.

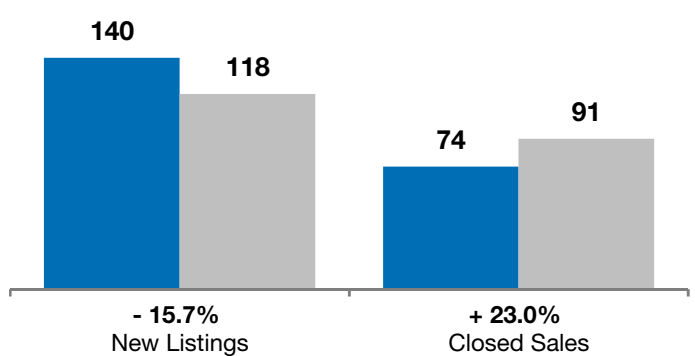
November

■ 2013 ■ 2014

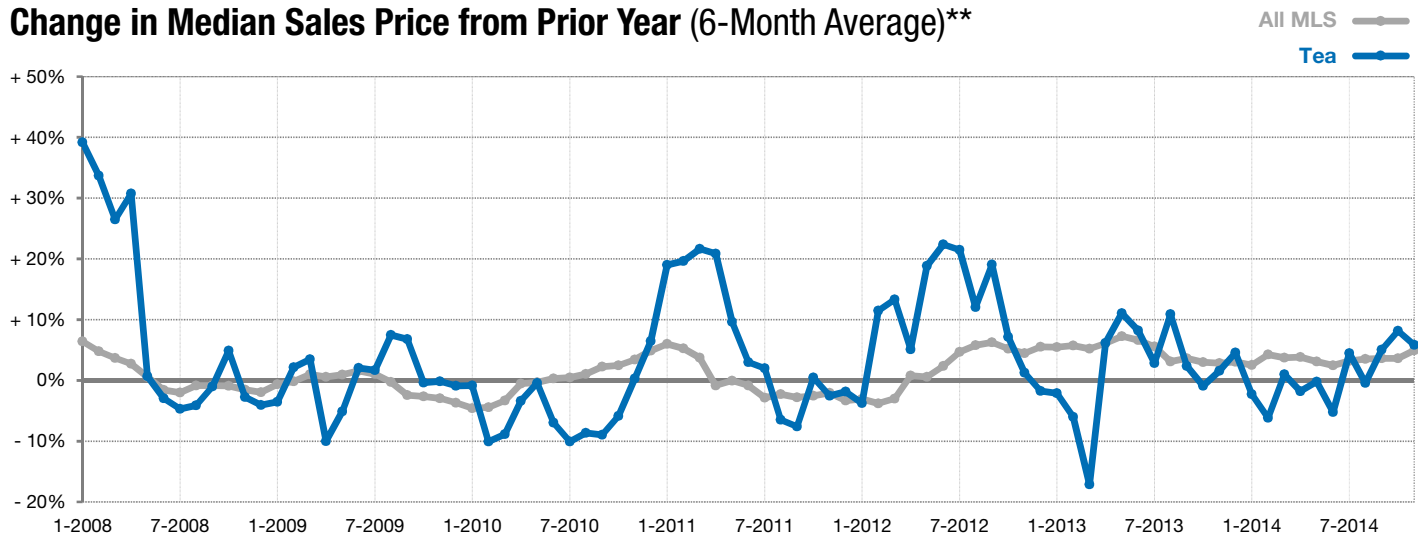


Year to Date

■ 2013 ■ 2014



Change in Median Sales Price from Prior Year (6-Month Average)**



** Each dot represents the change in median sales price from the prior year using a 6-month weighted average. This means that each of the 6 months used in a dot are proportioned according to their share of sales during that period. | Current as of December 4, 2014. All data from RASE Multiple Listing Service. | Powered by 10K Research and Marketing.