

# Local Market Update – December 2014

A RESEARCH TOOL PROVIDED BY THE REALTOR® ASSOCIATION OF THE SIOUX EMPIRE, INC.



## Tea

Lincoln County, SD

**- 33.3%**

Change in  
New Listings

**- 33.3%**

Change in  
Closed Sales

**+ 13.8%**

Change in  
Median Sales Price

### December

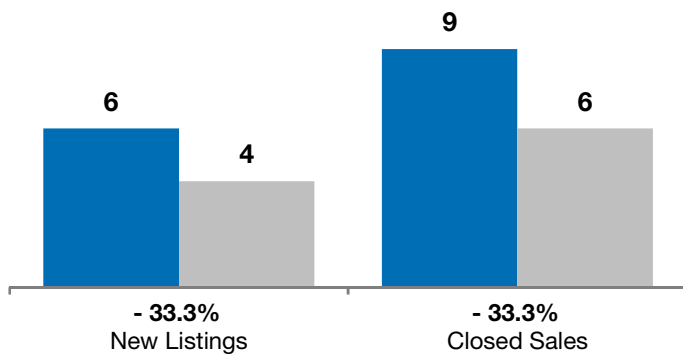
### Year to Date

	2013	2014	+ / -	2013	2014	+ / -
New Listings	6	4	- 33.3%	146	121	- 17.1%
Closed Sales	9	6	- 33.3%	83	97	+ 16.9%
Median Sales Price*	\$146,250	<b>\$166,450</b>	+ 13.8%	\$170,000	<b>\$188,000</b>	+ 10.6%
Average Sales Price*	\$154,839	<b>\$176,683</b>	+ 14.1%	\$185,433	<b>\$193,938</b>	+ 4.6%
Percent of Original List Price Received*	97.6%	<b>95.5%</b>	- 2.2%	98.5%	<b>98.7%</b>	+ 0.2%
Average Days on Market Until Sale	76	<b>85</b>	+ 12.2%	84	<b>96</b>	+ 14.5%
Inventory of Homes for Sale	24	<b>18</b>	- 25.0%	--	--	--
Months Supply of Inventory	3.3	<b>2.4</b>	- 29.1%	--	--	--

\* Does not account for list prices from any previous listing contracts or seller concessions. | Activity for one month can sometimes look extreme due to small sample size.

### December

■ 2013 ■ 2014

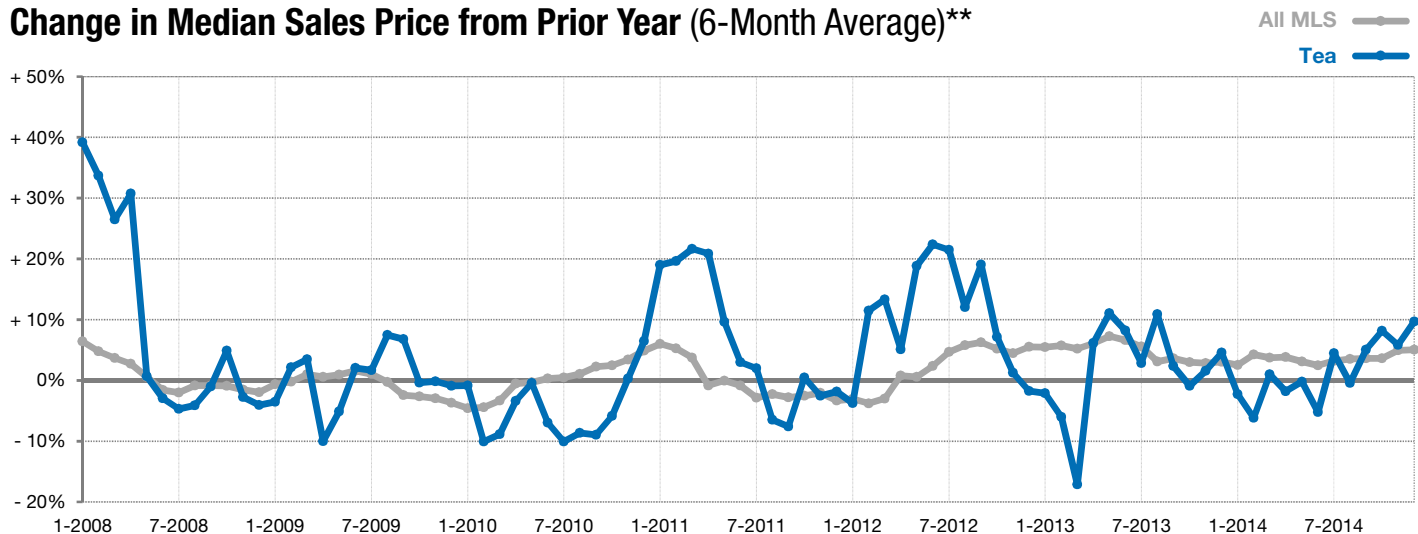


### Year to Date

■ 2013 ■ 2014



### Change in Median Sales Price from Prior Year (6-Month Average)\*\*



\*\* Each dot represents the change in median sales price from the prior year using a 6-month weighted average. This means that each of the 6 months used in a dot are proportioned according to their share of sales during that period. | Current as of January 7, 2015. All data from RASE Multiple Listing Service. | Powered by 10K Research and Marketing.