

# Local Market Update – January 2015

A RESEARCH TOOL PROVIDED BY THE REALTOR® ASSOCIATION OF THE SIOUX EMPIRE, INC.



## Tea

**- 25.0%**

Change in  
New Listings

**- 60.0%**

Change in  
Closed Sales

**- 31.9%**

Change in  
Median Sales Price

Lincoln County, SD

### January

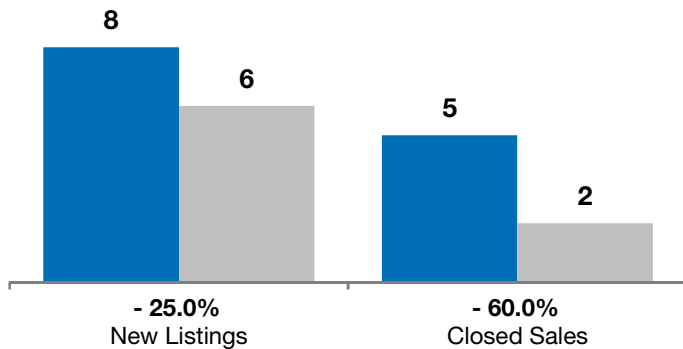
### Year to Date

	2014	2015	+ / -	2014	2015	+ / -
New Listings	8	6	- 25.0%	8	6	- 25.0%
Closed Sales	5	2	- 60.0%	5	2	- 60.0%
Median Sales Price*	\$204,900	<b>\$139,500</b>	- 31.9%	\$204,900	<b>\$139,500</b>	- 31.9%
Average Sales Price*	\$211,440	<b>\$139,500</b>	- 34.0%	\$211,440	<b>\$139,500</b>	- 34.0%
Percent of Original List Price Received*	98.7%	<b>99.5%</b>	+ 0.8%	98.7%	<b>99.5%</b>	+ 0.8%
Average Days on Market Until Sale	83	<b>69</b>	- 17.3%	83	<b>69</b>	- 17.3%
Inventory of Homes for Sale	26	<b>21</b>	- 19.2%	--	--	--
Months Supply of Inventory	3.5	<b>2.9</b>	- 19.2%	--	--	--

\* Does not account for list prices from any previous listing contracts or seller concessions. | Activity for one month can sometimes look extreme due to small sample size.

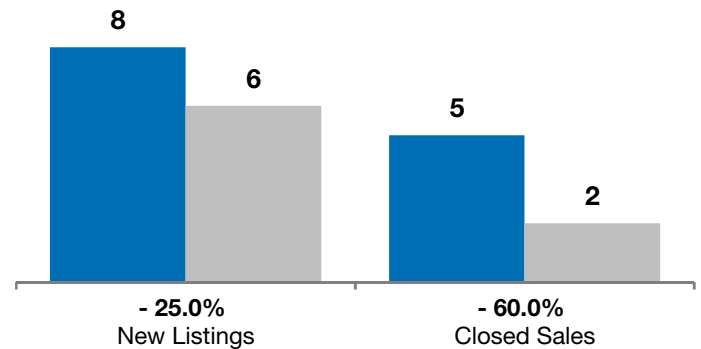
### January

■ 2014 ■ 2015

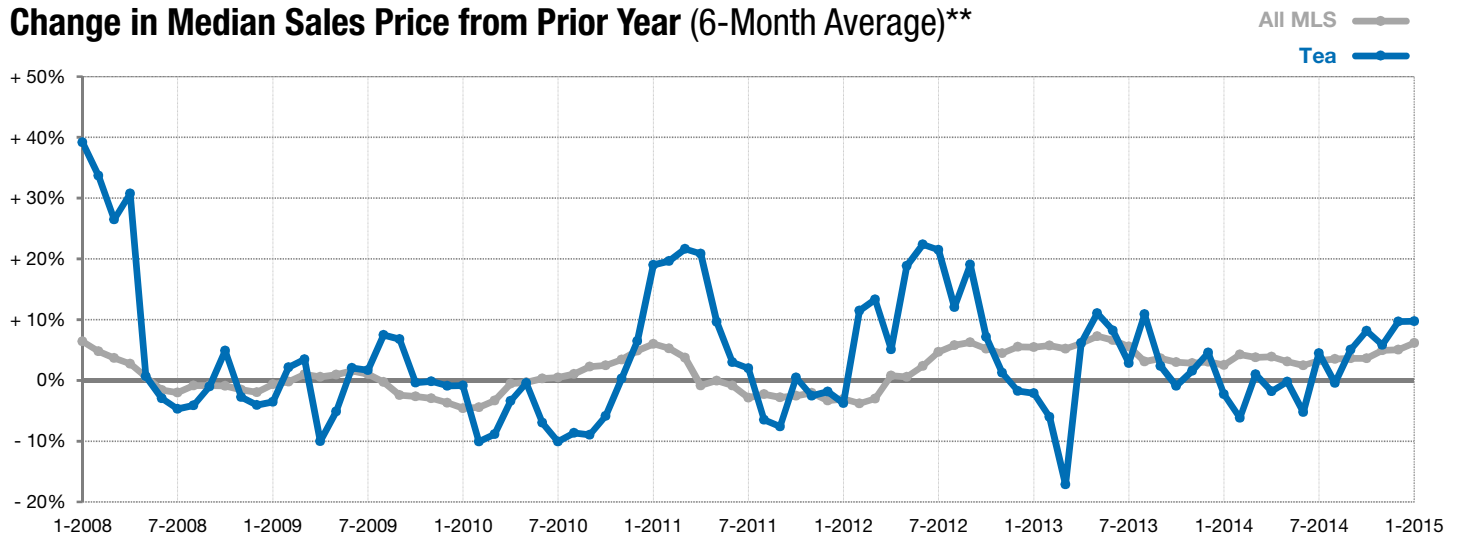


### Year to Date

■ 2014 ■ 2015



### Change in Median Sales Price from Prior Year (6-Month Average)\*\*



\*\* Each dot represents the change in median sales price from the prior year using a 6-month weighted average. This means that each of the 6 months used in a dot are proportioned according to their share of sales during that period. | Current as of February 5, 2015. All data from RASE Multiple Listing Service. | Powered by 10K Research and Marketing.