

Local Market Update – February 2015

A RESEARCH TOOL PROVIDED BY THE REALTOR® ASSOCIATION OF THE SIOUX EMPIRE, INC.



Tea

Lincoln County, SD

+ 66.7% **- 100.0%** **- 100.0%**

Change in
New Listings

Change in
Closed Sales

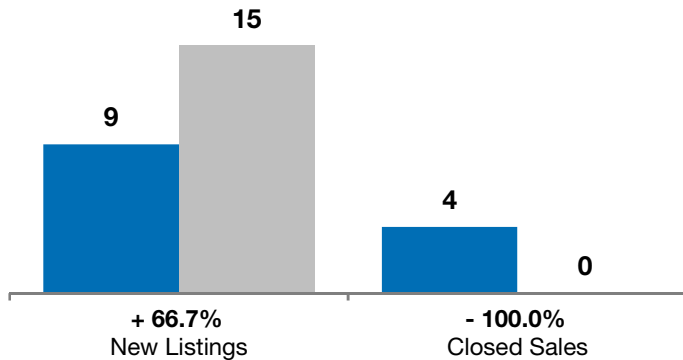
Change in
Median Sales Price

	February			Year to Date		
	2014	2015	+ / -	2014	2015	+ / -
New Listings	9	15	+ 66.7%	17	21	+ 23.5%
Closed Sales	4	0	- 100.0%	9	2	- 77.8%
Median Sales Price*	\$158,150	\$0	- 100.0%	\$184,900	\$139,500	- 24.6%
Average Sales Price*	\$154,450	\$0	- 100.0%	\$186,111	\$139,500	- 25.0%
Percent of Original List Price Received*	98.0%	0.0%	- 100.0%	98.4%	99.5%	+ 1.2%
Average Days on Market Until Sale	96	0	- 100.0%	89	69	- 22.6%
Inventory of Homes for Sale	29	31	+ 6.9%	--	--	--
Months Supply of Inventory	4.0	4.3	+ 5.7%	--	--	--

* Does not account for list prices from any previous listing contracts or seller concessions. | Activity for one month can sometimes look extreme due to small sample size.

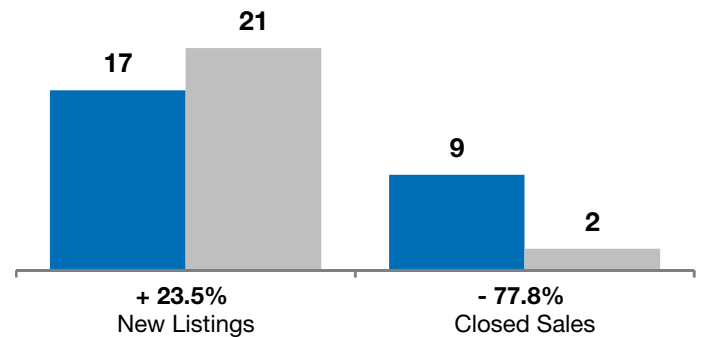
February

■ 2014 ■ 2015

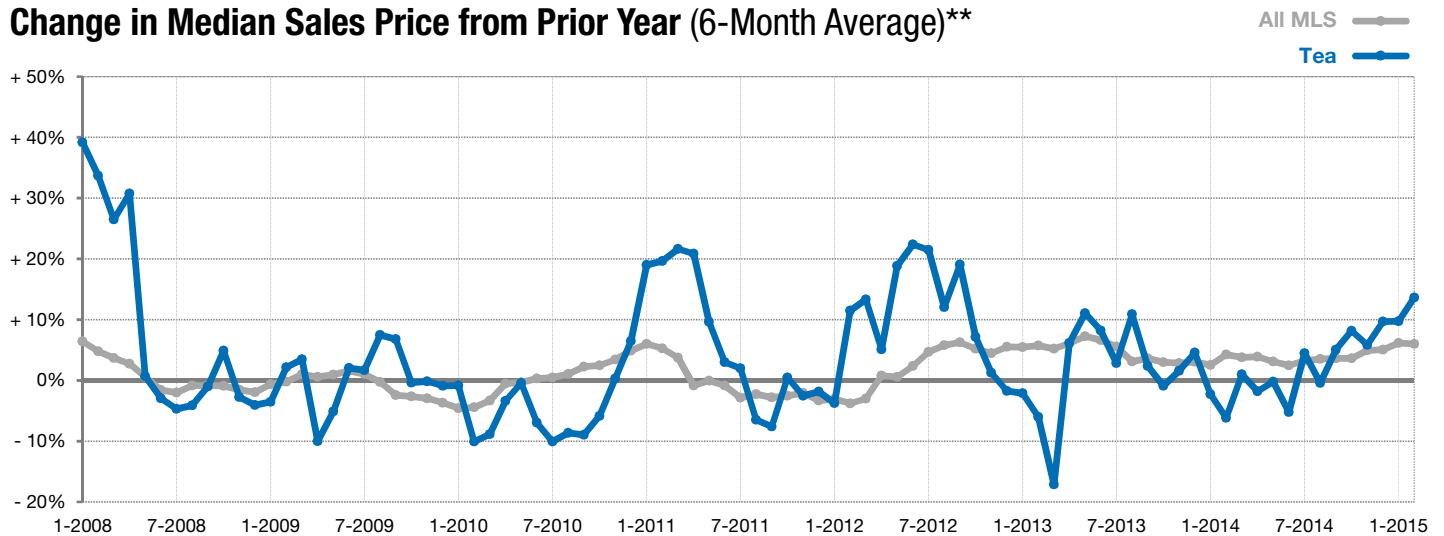


Year to Date

■ 2014 ■ 2015



Change in Median Sales Price from Prior Year (6-Month Average)**



** Each dot represents the change in median sales price from the prior year using a 6-month weighted average. This means that each of the 6 months used in a dot are proportioned according to their share of sales during that period. | Current as of March 5, 2015. All data from RASE Multiple Listing Service. | Powered by 10K Research and Marketing.