

Local Market Update – March 2015

A RESEARCH TOOL PROVIDED BY THE REALTOR® ASSOCIATION OF THE SIOUX EMPIRE, INC.



Tea

- 6.7%

Change in
New Listings

+ 60.0%

Change in
Closed Sales

+ 17.5%

Change in
Median Sales Price

Lincoln County, SD

March

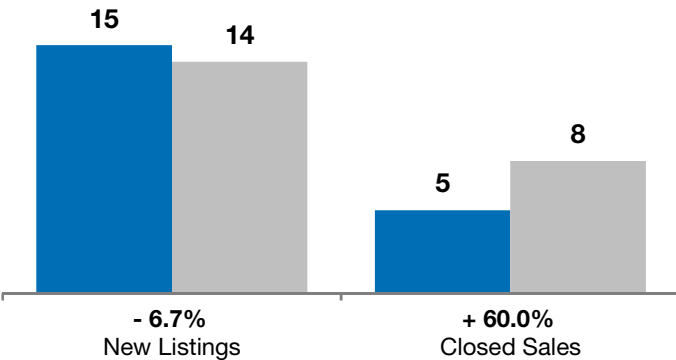
Year to Date

	2014	2015	+ / -	2014	2015	+ / -
New Listings	15	14	- 6.7%	32	35	+ 9.4%
Closed Sales	5	8	+ 60.0%	14	10	- 28.6%
Median Sales Price*	\$175,500	\$206,250	+ 17.5%	\$184,600	\$177,500	- 3.8%
Average Sales Price*	\$167,800	\$198,050	+ 18.0%	\$179,571	\$186,340	+ 3.8%
Percent of Original List Price Received*	97.7%	97.9%	+ 0.3%	98.1%	98.2%	+ 0.1%
Average Days on Market Until Sale	80	159	+ 99.7%	86	141	+ 64.5%
Inventory of Homes for Sale	36	34	- 5.6%	--	--	--
Months Supply of Inventory	5.0	4.4	- 11.7%	--	--	--

* Does not account for list prices from any previous listing contracts or seller concessions. | Activity for one month can sometimes look extreme due to small sample size.

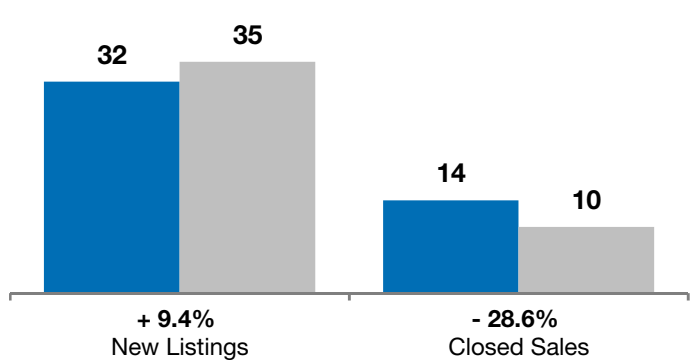
March

■ 2014 ■ 2015

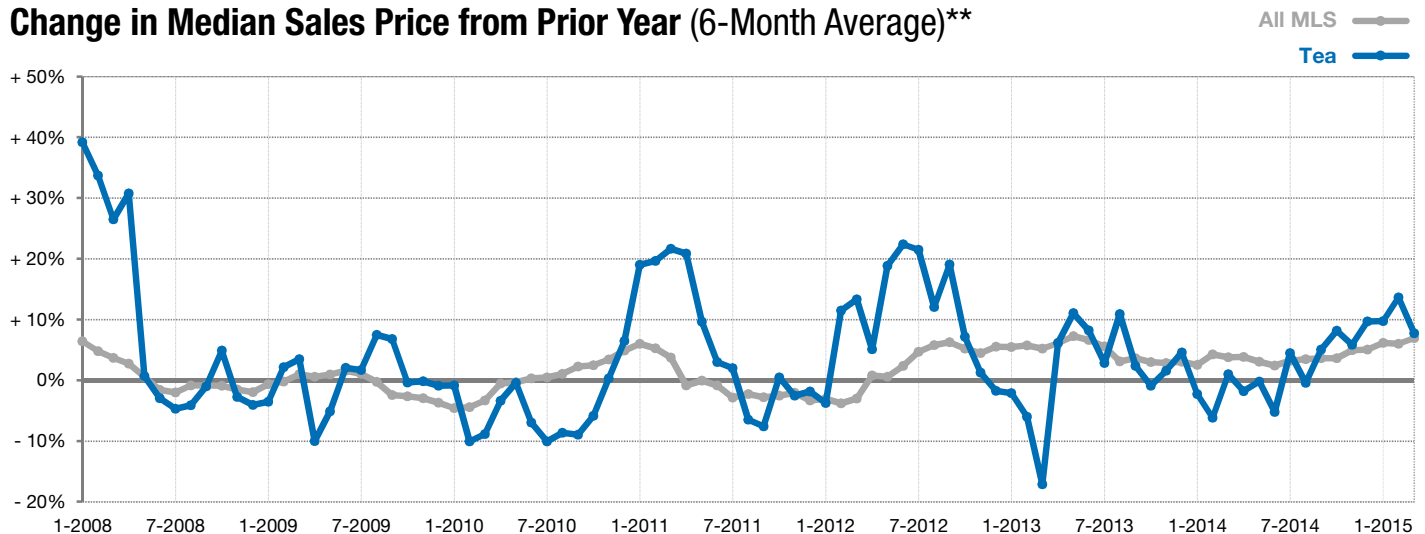


Year to Date

■ 2014 ■ 2015



Change in Median Sales Price from Prior Year (6-Month Average)**



** Each dot represents the change in median sales price from the prior year using a 6-month weighted average. This means that each of the 6 months used in a dot are proportioned according to their share of sales during that period. | Current as of April 6, 2015. All data from RASE Multiple Listing Service. | Powered by 10K Research and Marketing.