

# Local Market Update – May 2015

A RESEARCH TOOL PROVIDED BY THE REALTOR® ASSOCIATION OF THE SIOUX EMPIRE, INC.



## Tea

**+ 63.6%**

Change in  
New Listings

**0.0%**

Change in  
Closed Sales

**+ 36.6%**

Change in  
Median Sales Price

Lincoln County, SD

**May**

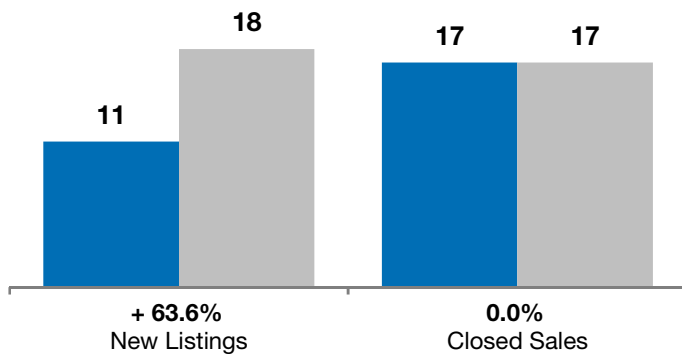
**Year to Date**

	2014	2015	+ / -	2014	2015	+ / -
New Listings	11	18	+ 63.6%	60	77	+ 28.3%
Closed Sales	17	17	0.0%	39	35	- 10.3%
Median Sales Price*	\$166,600	<b>\$227,500</b>	+ 36.6%	\$179,900	<b>\$205,100</b>	+ 14.0%
Average Sales Price*	\$175,695	<b>\$233,759</b>	+ 33.0%	\$188,865	<b>\$203,913</b>	+ 8.0%
Percent of Original List Price Received*	98.4%	<b>99.2%</b>	+ 0.9%	99.0%	<b>98.8%</b>	- 0.2%
Average Days on Market Until Sale	110	<b>76</b>	- 31.1%	97	<b>92</b>	- 5.4%
Inventory of Homes for Sale	38	<b>42</b>	+ 10.5%	--	--	--
Months Supply of Inventory	5.0	<b>5.0</b>	- 0.4%	--	--	--

\* Does not account for list prices from any previous listing contracts or seller concessions. | Activity for one month can sometimes look extreme due to small sample size.

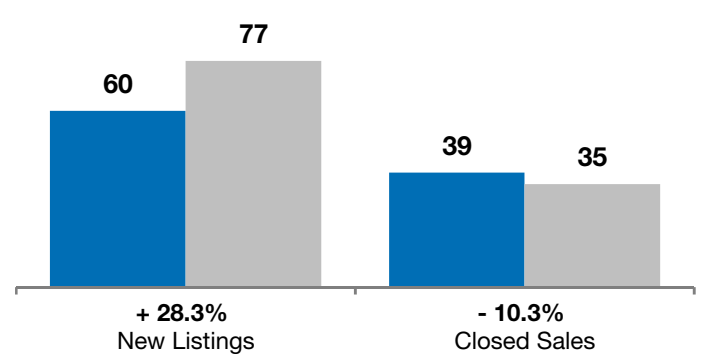
**May**

■ 2014 ■ 2015

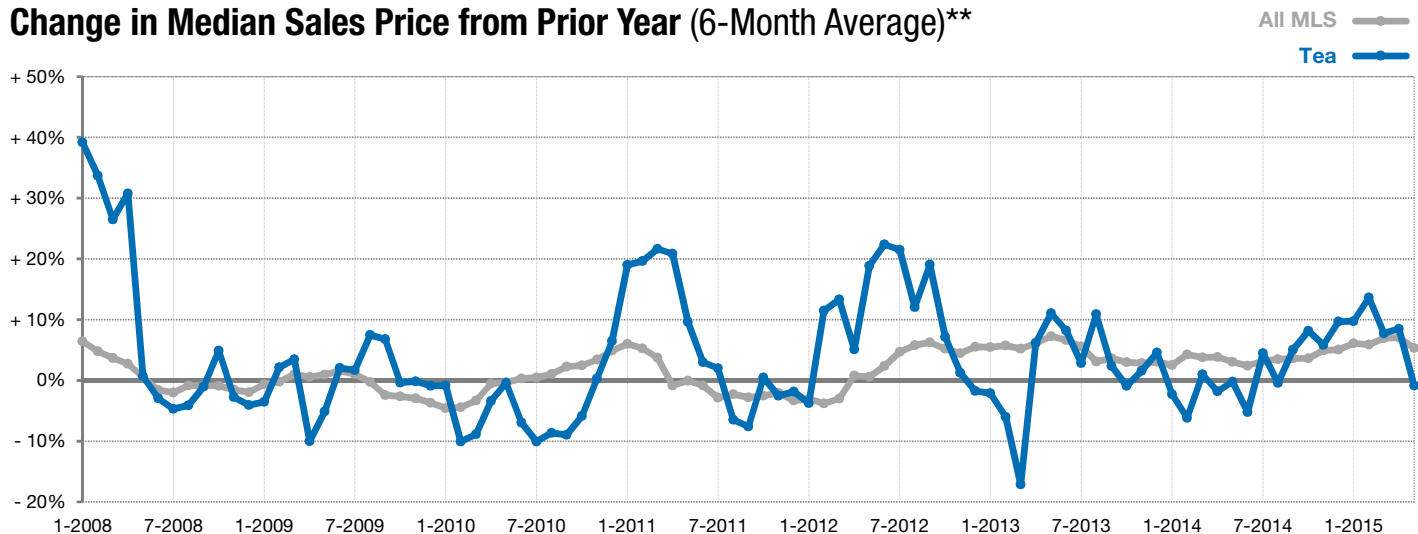


**Year to Date**

■ 2014 ■ 2015



### Change in Median Sales Price from Prior Year (6-Month Average)\*\*



\*\* Each dot represents the change in median sales price from the prior year using a 6-month weighted average. This means that each of the 6 months used in a dot are proportioned according to their share of sales during that period. | Current as of June 4, 2015. All data from RASE Multiple Listing Service. | Powered by 10K Research and Marketing.