

Local Market Update – July 2015

A RESEARCH TOOL PROVIDED BY THE REALTOR® ASSOCIATION OF THE SIOUX EMPIRE, INC.



Lennox

Lincoln County, SD

- 28.6%

Change in
New Listings

+ 66.7%

Change in
Closed Sales

+ 11.9%

Change in
Median Sales Price

July

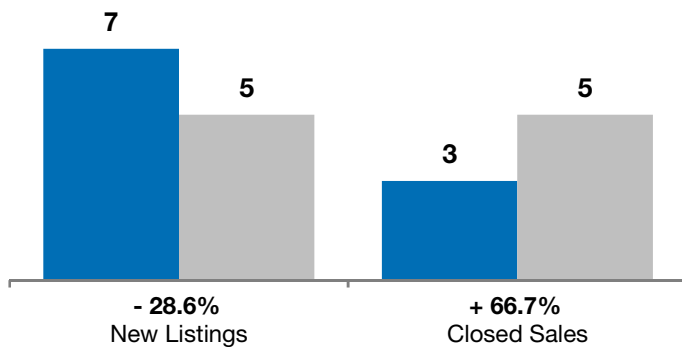
Year to Date

	2014	2015	+ / -	2014	2015	+ / -
New Listings	7	5	- 28.6%	37	35	- 5.4%
Closed Sales	3	5	+ 66.7%	22	24	+ 9.1%
Median Sales Price*	\$135,000	\$151,000	+ 11.9%	\$127,500	\$139,500	+ 9.4%
Average Sales Price*	\$176,833	\$212,380	+ 20.1%	\$126,191	\$163,244	+ 29.4%
Percent of Original List Price Received*	98.2%	99.2%	+ 1.0%	97.9%	98.6%	+ 0.7%
Average Days on Market Until Sale	89	56	- 37.3%	75	92	+ 23.7%
Inventory of Homes for Sale	17	12	- 29.4%	--	--	--
Months Supply of Inventory	5.1	3.4	- 32.2%	--	--	--

* Does not account for list prices from any previous listing contracts or seller concessions. | Activity for one month can sometimes look extreme due to small sample size.

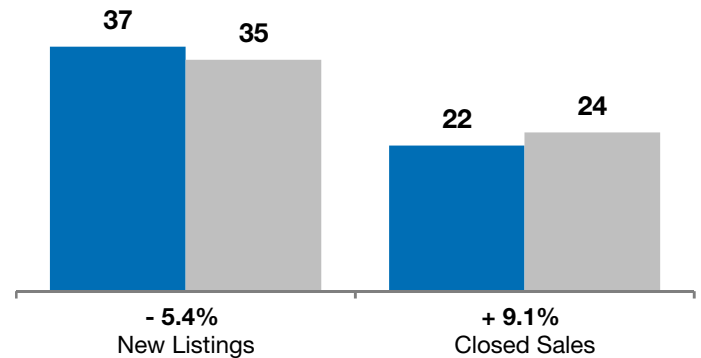
July

■ 2014 ■ 2015

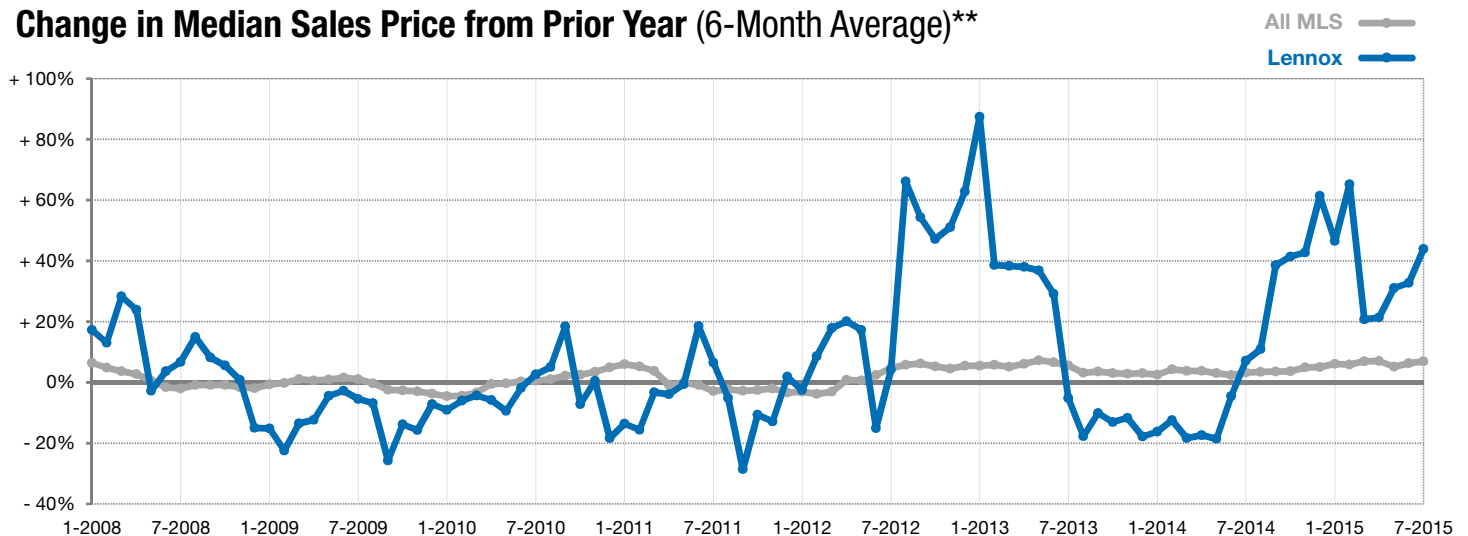


Year to Date

■ 2014 ■ 2015



Change in Median Sales Price from Prior Year (6-Month Average)**



** Each dot represents the change in median sales price from the prior year using a 6-month weighted average. This means that each of the 6 months used in a dot are proportioned according to their share of sales during that period. | Current as of August 6, 2015. All data from RASE Multiple Listing Service. | Powered by 10K Research and Marketing.