

Local Market Update – November 2015

A RESEARCH TOOL PROVIDED BY THE REALTOR® ASSOCIATION OF THE SIOUX EMPIRE, INC.



Tea

Lincoln County, SD

+ 200.0%

Change in
New Listings

0.0%

Change in
Closed Sales

- 12.1%

Change in
Median Sales Price

November

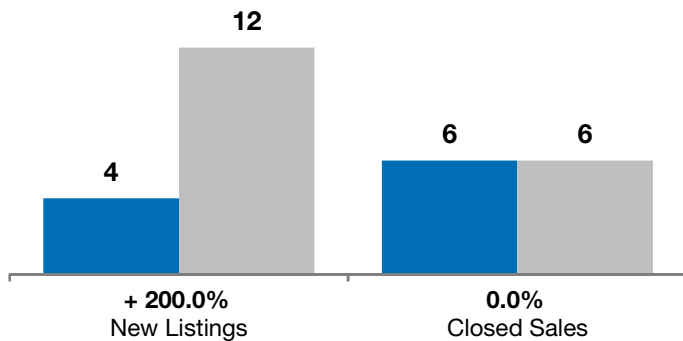
Year to Date

	2014	2015	+ / -	2014	2015	+ / -
New Listings	4	12	+ 200.0%	117	152	+ 29.9%
Closed Sales	6	6	0.0%	91	107	+ 17.6%
Median Sales Price*	\$187,750	\$165,000	- 12.1%	\$188,000	\$209,000	+ 11.2%
Average Sales Price*	\$220,933	\$184,817	- 16.3%	\$195,076	\$217,095	+ 11.3%
Percent of Original List Price Received*	100.0%	96.9%	- 3.1%	98.9%	99.0%	+ 0.1%
Average Days on Market Until Sale	84	142	+ 68.3%	96	91	- 6.0%
Inventory of Homes for Sale	23	25	+ 8.7%	--	--	--
Months Supply of Inventory	3.0	2.4	- 21.0%	--	--	--

* Does not account for list prices from any previous listing contracts or seller concessions. | Activity for one month can sometimes look extreme due to small sample size.

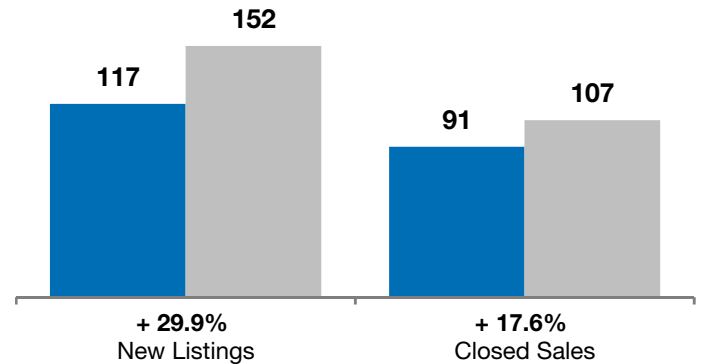
November

■ 2014 ■ 2015

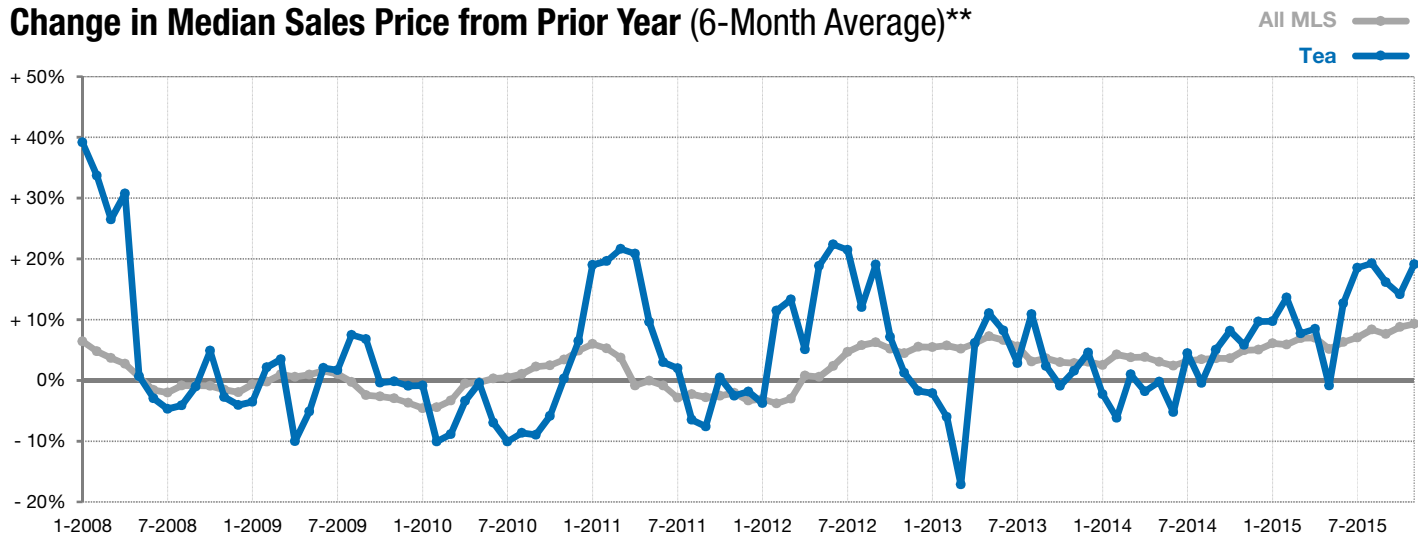


Year to Date

■ 2014 ■ 2015



Change in Median Sales Price from Prior Year (6-Month Average)**



** Each dot represents the change in median sales price from the prior year using a 6-month weighted average. This means that each of the 6 months used in a dot are proportioned according to their share of sales during that period. | Current as of December 4, 2015. All data from RASE Multiple Listing Service. | Powered by ShowingTime 10K.