

Local Market Update – December 2015

A RESEARCH TOOL PROVIDED BY THE REALTOR® ASSOCIATION OF THE SIOUX EMPIRE, INC.



Tea

Lincoln County, SD

+ 25.0%

Change in
New Listings

- 50.0%

Change in
Closed Sales

- 4.5%

Change in
Median Sales Price

December

Year to Date

	2014	2015	+ / -	2014	2015	+ / -
New Listings	4	5	+ 25.0%	121	157	+ 29.8%
Closed Sales	6	3	- 50.0%	97	110	+ 13.4%
Median Sales Price*	\$166,450	\$159,000	- 4.5%	\$188,000	\$205,425	+ 9.3%
Average Sales Price*	\$176,683	\$139,633	- 21.0%	\$193,938	\$214,983	+ 10.9%
Percent of Original List Price Received*	95.5%	99.8%	+ 4.5%	98.7%	99.0%	+ 0.3%
Average Days on Market Until Sale	85	101	+ 19.2%	96	91	- 5.0%
Inventory of Homes for Sale	18	24	+ 33.3%	--	--	--
Months Supply of Inventory	2.4	2.3	- 1.6%	--	--	--

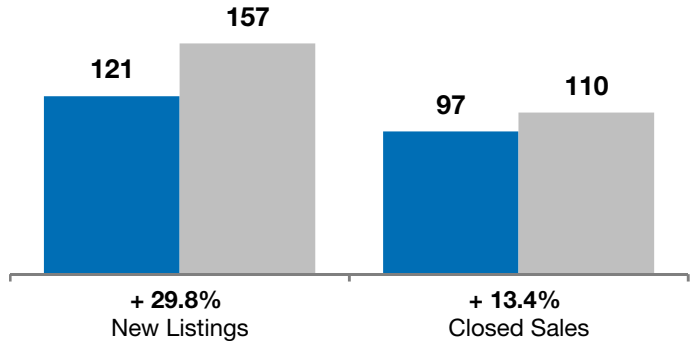
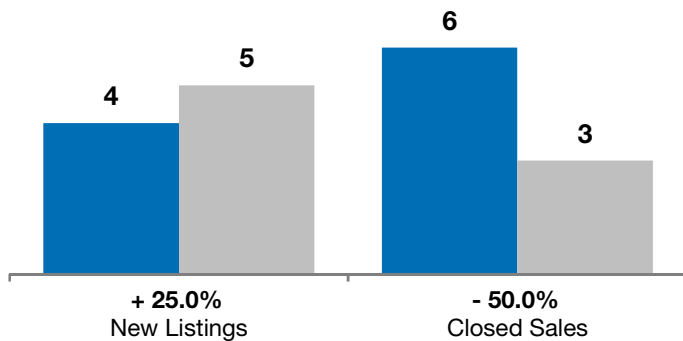
* Does not account for list prices from any previous listing contracts or seller concessions. | Activity for one month can sometimes look extreme due to small sample size.

December

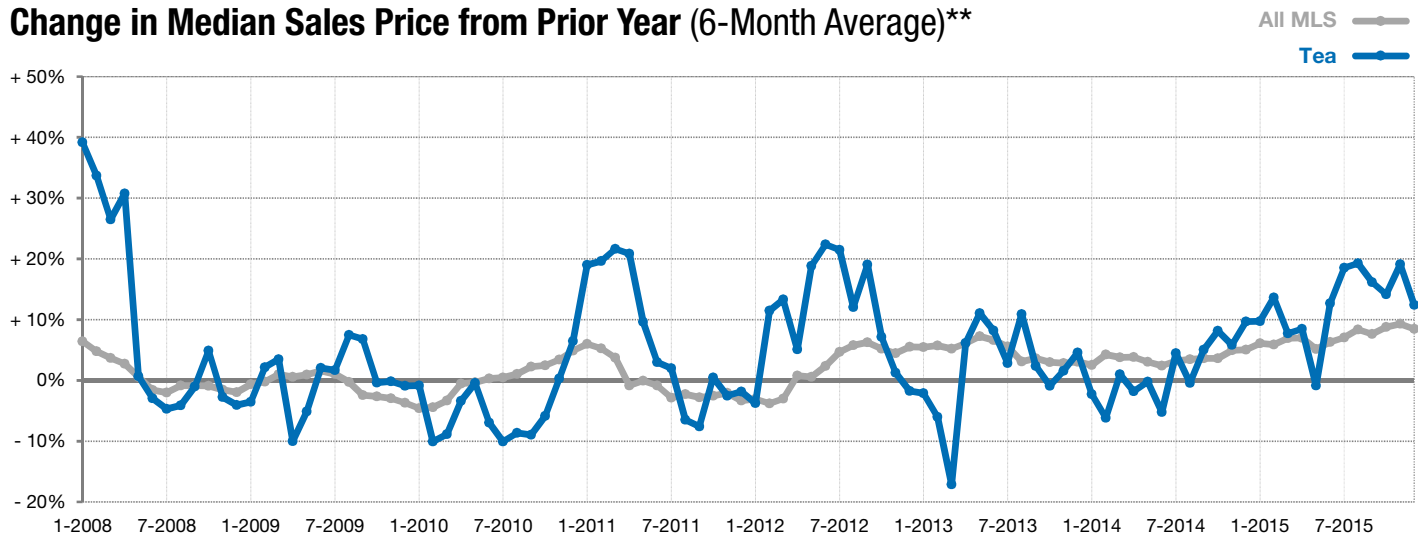
■ 2014 ■ 2015

Year to Date

■ 2014 ■ 2015



Change in Median Sales Price from Prior Year (6-Month Average)**



** Each dot represents the change in median sales price from the prior year using a 6-month weighted average. This means that each of the 6 months used in a dot are proportioned according to their share of sales during that period. | Current as of January 7, 2016. All data from RASE Multiple Listing Service. | Powered by ShowingTime 10K.