

Local Market Update – January 2016

A RESEARCH TOOL PROVIDED BY THE REALTOR® ASSOCIATION OF THE SIOUX EMPIRE, INC.



Tea

Lincoln County, SD

- 33.3% **+ 150.0%** **+ 86.4%**
 Change in New Listings Change in Closed Sales Change in Median Sales Price

	January			Year to Date		
	2015	2016	+ / -	2015	2016	+ / -
New Listings	6	4	- 33.3%	6	4	- 33.3%
Closed Sales	2	5	+ 150.0%	2	5	+ 150.0%
Median Sales Price*	\$139,500	\$260,000	+ 86.4%	\$139,500	\$260,000	+ 86.4%
Average Sales Price*	\$139,500	\$249,360	+ 78.8%	\$139,500	\$249,360	+ 78.8%
Percent of Original List Price Received*	99.5%	98.6%	- 0.9%	99.5%	98.6%	- 0.9%
Average Days on Market Until Sale	69	104	+ 51.3%	69	104	+ 51.3%
Inventory of Homes for Sale	21	22	+ 4.8%	--	--	--
Months Supply of Inventory	2.9	2.1	- 27.8%	--	--	--

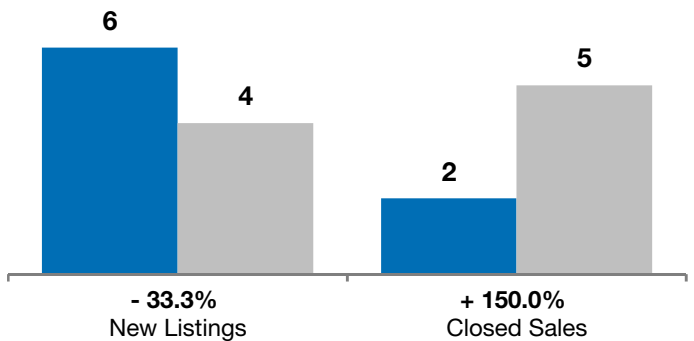
* Does not account for list prices from any previous listing contracts or seller concessions. | Activity for one month can sometimes look extreme due to small sample size.

January

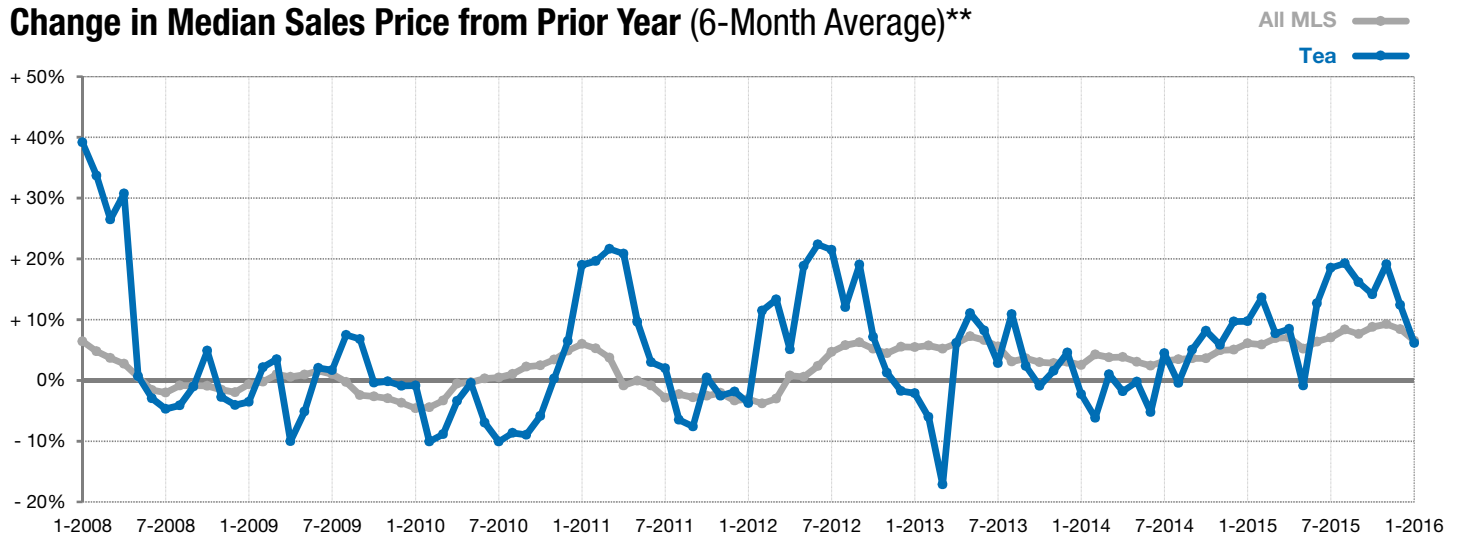
■ 2015 ■ 2016

Year to Date

■ 2015 ■ 2016



Change in Median Sales Price from Prior Year (6-Month Average)**



** Each dot represents the change in median sales price from the prior year using a 6-month weighted average. This means that each of the 6 months used in a dot are proportioned according to their share of sales during that period. | Current as of February 4, 2016. All data from RASE Multiple Listing Service. | Powered by ShowingTime 10K.