

Local Market Update – February 2016

A RESEARCH TOOL PROVIDED BY THE REALTOR® ASSOCIATION OF THE SIOUX EMPIRE, INC.



Tea

Lincoln County, SD

- 18.8%

--

--

Change in
New Listings

Change in
Closed Sales

Change in
Median Sales Price

February

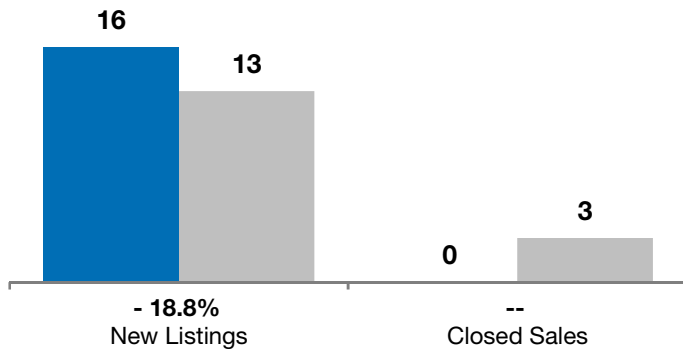
Year to Date

	2015	2016	+ / -	2015	2016	+ / -
New Listings	16	13	- 18.8%	22	17	- 22.7%
Closed Sales	0	3	--	2	8	+ 300.0%
Median Sales Price*	\$0	\$240,000	--	\$139,500	\$250,000	+ 79.2%
Average Sales Price*	\$0	\$238,300	--	\$139,500	\$245,213	+ 75.8%
Percent of Original List Price Received*	0.0%	93.7%	--	99.5%	96.8%	- 2.8%
Average Days on Market Until Sale	0	265	--	69	165	+ 138.8%
Inventory of Homes for Sale	34	28	- 17.6%	--	--	--
Months Supply of Inventory	4.4	2.8	- 36.9%	--	--	--

* Does not account for list prices from any previous listing contracts or seller concessions. | Activity for one month can sometimes look extreme due to small sample size.

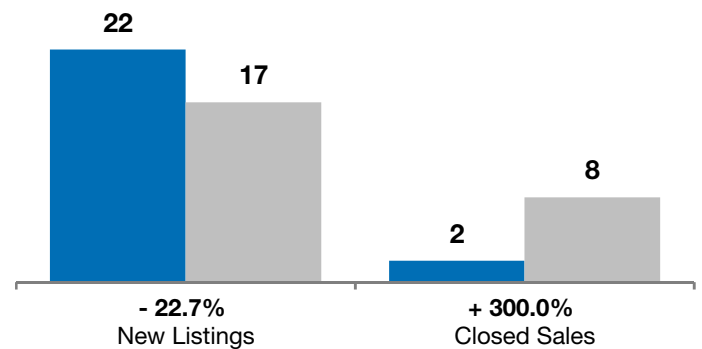
February

■ 2015 ■ 2016

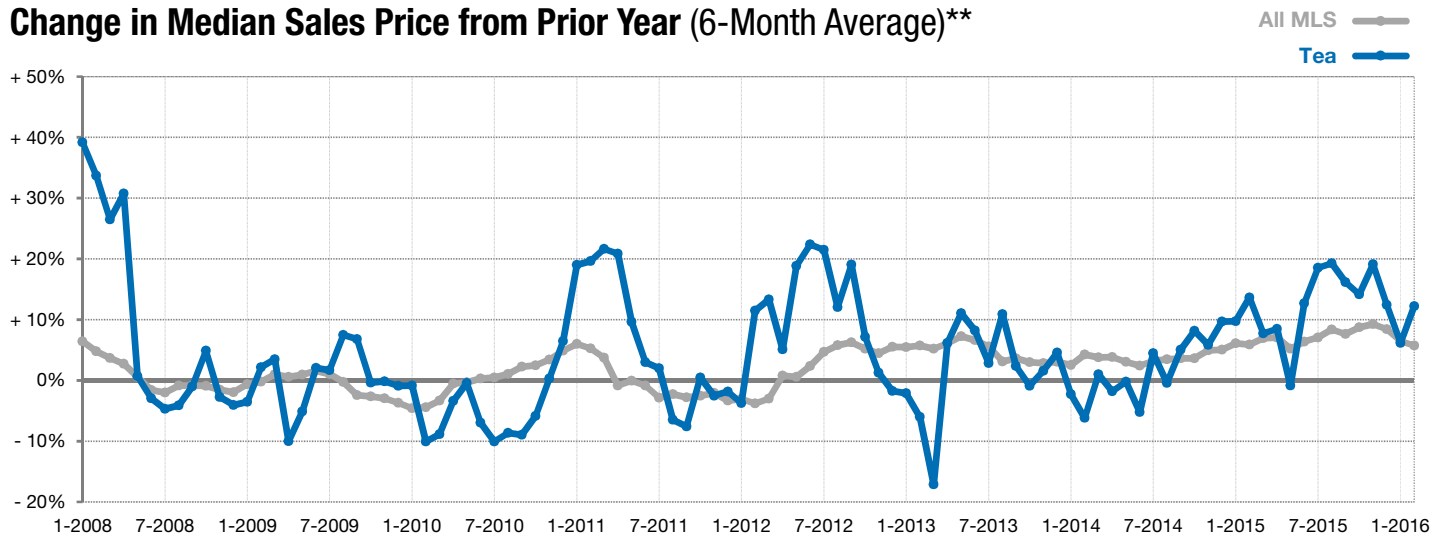


Year to Date

■ 2015 ■ 2016



Change in Median Sales Price from Prior Year (6-Month Average)**



** Each dot represents the change in median sales price from the prior year using a 6-month weighted average. This means that each of the 6 months used in a dot are proportioned according to their share of sales during that period. | Current as of March 4, 2016. All data from RASE Multiple Listing Service. | Powered by ShowingTime 10K.