

Local Market Update – March 2016

A RESEARCH TOOL PROVIDED BY THE REALTOR® ASSOCIATION OF THE SIOUX EMPIRE, INC.



Baltic

+ 40.0%

Change in
New Listings

- 66.7%

Change in
Closed Sales

+ 120.8%

Change in
Median Sales Price

Minnehaha County, SD

March

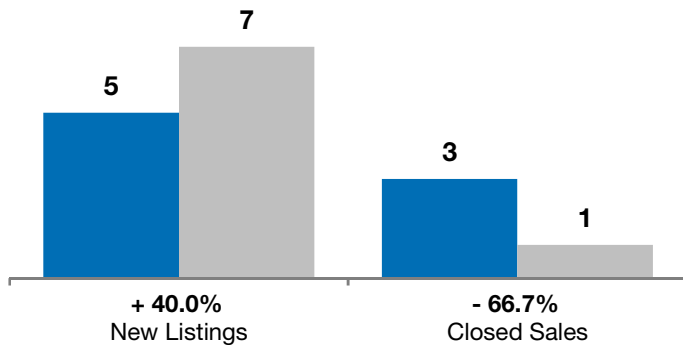
Year to Date

	2015	2016	+ / -	2015	2016	+ / -
New Listings	5	7	+ 40.0%	10	12	+ 20.0%
Closed Sales	3	1	- 66.7%	7	7	0.0%
Median Sales Price*	\$144,900	\$320,000	+ 120.8%	\$144,900	\$159,000	+ 9.7%
Average Sales Price*	\$144,133	\$320,000	+ 122.0%	\$165,757	\$176,510	+ 6.5%
Percent of Original List Price Received*	98.5%	98.5%	- 0.1%	99.0%	97.2%	- 1.8%
Average Days on Market Until Sale	99	72	- 27.3%	96	75	- 21.7%
Inventory of Homes for Sale	10	10	0.0%	--	--	--
Months Supply of Inventory	4.3	4.0	- 6.7%	--	--	--

* Does not account for list prices from any previous listing contracts or seller concessions. | Activity for one month can sometimes look extreme due to small sample size.

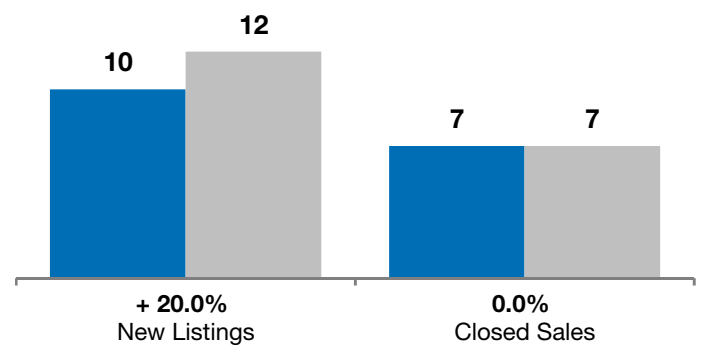
March

■ 2015 ■ 2016

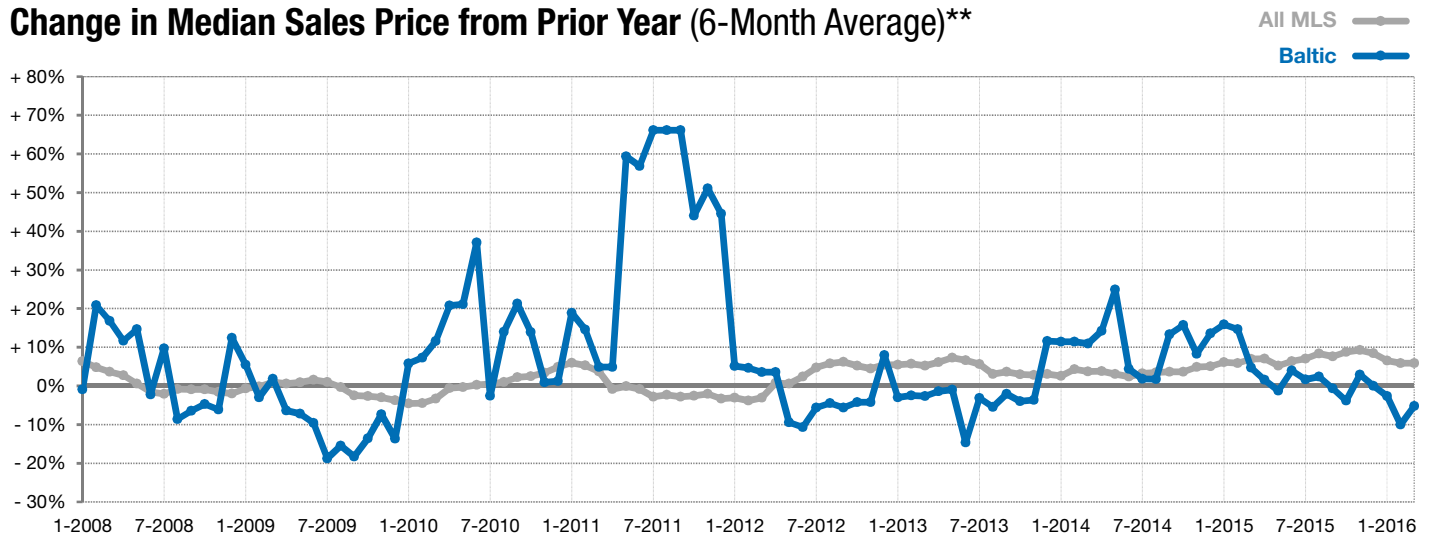


Year to Date

■ 2015 ■ 2016



Change in Median Sales Price from Prior Year (6-Month Average)**



** Each dot represents the change in median sales price from the prior year using a 6-month weighted average. This means that each of the 6 months used in a dot are proportioned according to their share of sales during that period. | Current as of April 6, 2016. All data from RASE Multiple Listing Service. | Powered by ShowingTime 10K.