

# Local Market Update – March 2016

A RESEARCH TOOL PROVIDED BY THE REALTOR® ASSOCIATION OF THE SIOUX EMPIRE, INC.



## Tea

**+ 42.1%**

Change in  
New Listings

**- 25.0%**

Change in  
Closed Sales

**- 22.5%**

Change in  
Median Sales Price

Lincoln County, SD

### March

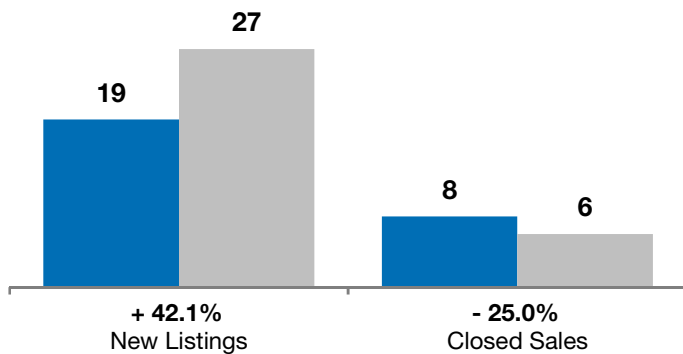
### Year to Date

	2015	2016	+ / -	2015	2016	+ / -
New Listings	19	27	+ 42.1%	41	44	+ 7.3%
Closed Sales	8	6	- 25.0%	10	14	+ 40.0%
Median Sales Price*	\$206,250	\$159,900	- 22.5%	\$177,500	\$196,650	+ 10.8%
Average Sales Price*	\$198,050	\$162,350	- 18.0%	\$186,340	\$209,700	+ 12.5%
Percent of Original List Price Received*	97.9%	99.3%	+ 1.4%	98.2%	97.9%	- 0.4%
Average Days on Market Until Sale	159	146	- 8.3%	141	157	+ 11.1%
Inventory of Homes for Sale	44	39	- 11.4%	--	--	--
Months Supply of Inventory	5.5	3.7	- 32.5%	--	--	--

\* Does not account for list prices from any previous listing contracts or seller concessions. | Activity for one month can sometimes look extreme due to small sample size.

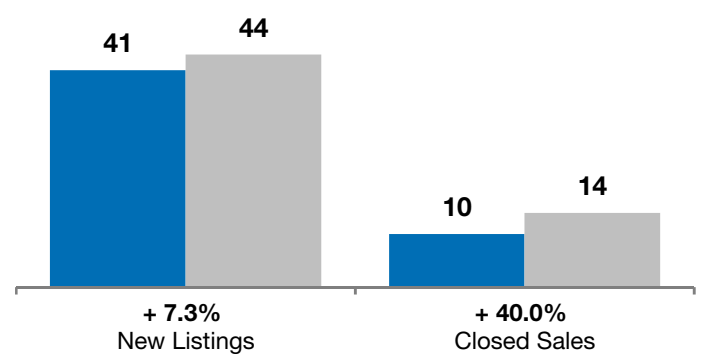
### March

■ 2015 ■ 2016

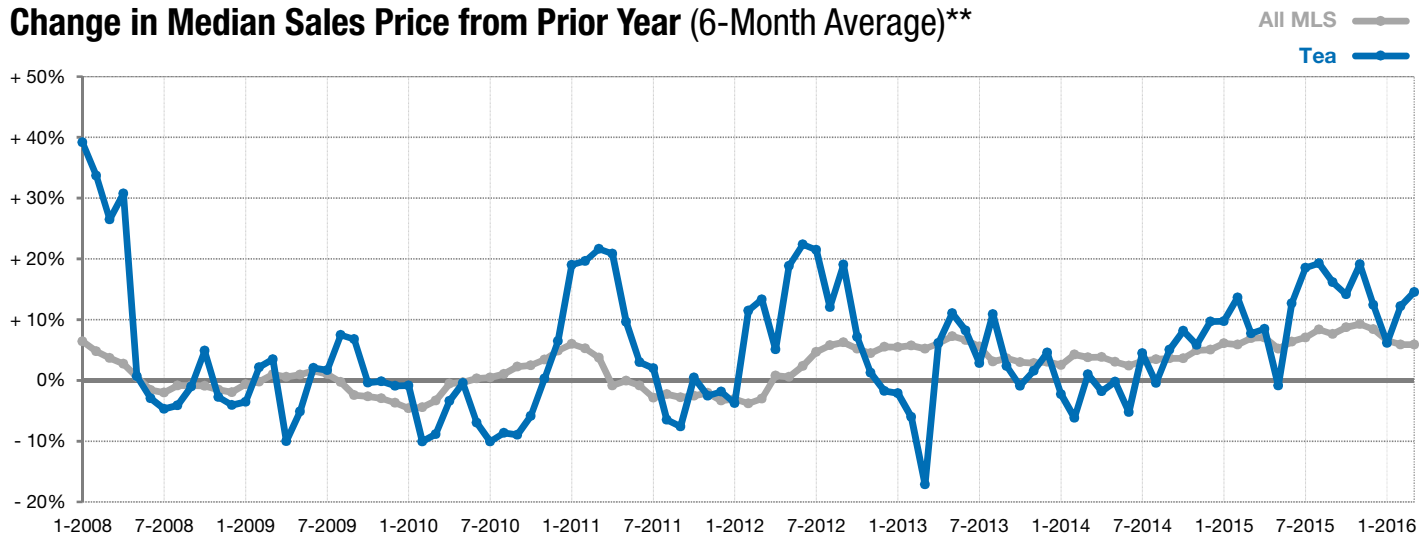


### Year to Date

■ 2015 ■ 2016



### Change in Median Sales Price from Prior Year (6-Month Average)\*\*



\*\* Each dot represents the change in median sales price from the prior year using a 6-month weighted average. This means that each of the 6 months used in a dot are proportioned according to their share of sales during that period. | Current as of April 6, 2016. All data from RASE Multiple Listing Service. | Powered by ShowingTime 10K.