

# Local Market Update – January 2017

A RESEARCH TOOL PROVIDED BY THE REALTOR® ASSOCIATION OF THE SIOUX EMPIRE, INC.



## Brandon

**+ 63.6%**

Change in  
New Listings

**+ 57.1%**

Change in  
Closed Sales

**- 7.6%**

Change in  
Median Sales Price

Minnehaha County, SD

### January

### Year to Date

	2016	2017	+ / -	2016	2017	+ / -
New Listings	11	18	+ 63.6%	11	18	+ 63.6%
Closed Sales	7	11	+ 57.1%	7	11	+ 57.1%
Median Sales Price*	\$205,000	\$189,500	- 7.6%	\$205,000	\$189,500	- 7.6%
Average Sales Price*	\$231,143	\$207,382	- 10.3%	\$231,143	\$207,382	- 10.3%
Percent of Original List Price Received*	98.2%	98.7%	+ 0.6%	98.2%	98.7%	+ 0.6%
Average Days on Market Until Sale	108	78	- 28.3%	108	78	- 28.3%
Inventory of Homes for Sale	42	33	- 21.4%	--	--	--
Months Supply of Inventory	2.7	2.0	- 27.0%	--	--	--

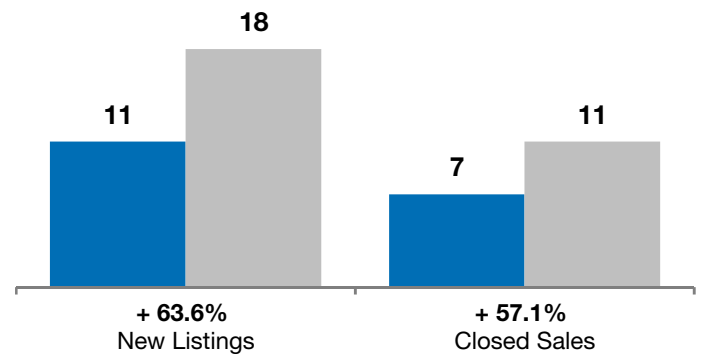
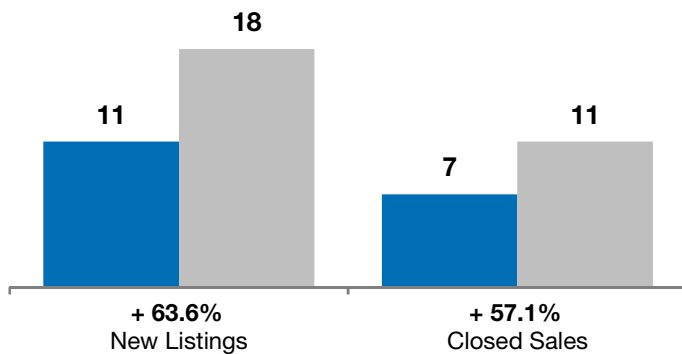
\* Does not account for list prices from any previous listing contracts or seller concessions. | Activity for one month can sometimes look extreme due to small sample size.

### January

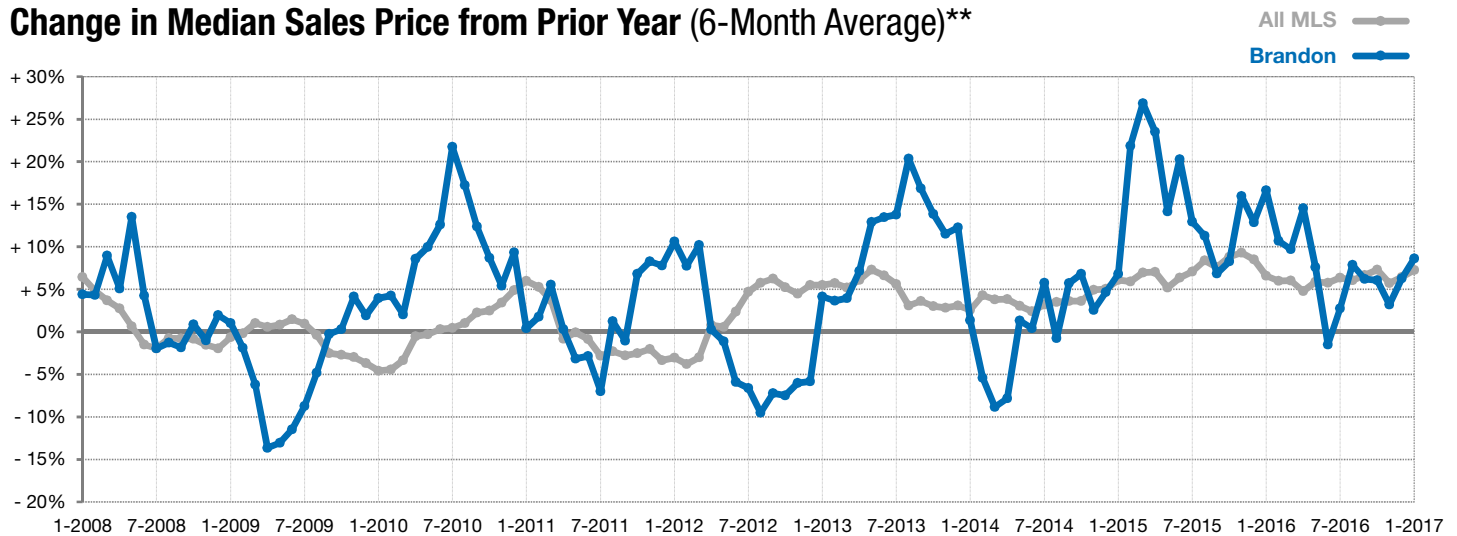
■ 2016 ■ 2017

### Year to Date

■ 2016 ■ 2017



### Change in Median Sales Price from Prior Year (6-Month Average)\*\*



\*\* Each dot represents the change in median sales price from the prior year using a 6-month weighted average. This means that each of the 6 months used in a dot are proportioned according to their share of sales during that period. | Current as of February 3, 2017. All data from RASE Multiple Listing Service. | Powered by ShowingTime 10K.