

Local Market Update – January 2017

A RESEARCH TOOL PROVIDED BY THE REALTOR® ASSOCIATION OF THE SIOUX EMPIRE, INC.



Dell Rapids

- 80.0%

Change in
New Listings

- 33.3%

Change in
Closed Sales

+ 2.5%

Change in
Median Sales Price

Minnehaha County, SD

January

Year to Date

| | 2016 | 2017 | + / - | 2016 | 2017 | + / - |
|--|-----------|------------------|---------|-----------|------------------|---------|
| New Listings | 5 | 1 | - 80.0% | 5 | 1 | - 80.0% |
| Closed Sales | 6 | 4 | - 33.3% | 6 | 4 | - 33.3% |
| Median Sales Price* | \$158,500 | \$162,450 | + 2.5% | \$158,500 | \$162,450 | + 2.5% |
| Average Sales Price* | \$161,108 | \$149,975 | - 6.9% | \$161,108 | \$149,975 | - 6.9% |
| Percent of Original List Price Received* | 99.8% | 97.5% | - 2.3% | 99.8% | 97.5% | - 2.3% |
| Average Days on Market Until Sale | 135 | 103 | - 24.1% | 135 | 103 | - 24.1% |
| Inventory of Homes for Sale | 16 | 8 | - 50.0% | -- | -- | -- |
| Months Supply of Inventory | 2.3 | 1.4 | - 42.3% | -- | -- | -- |

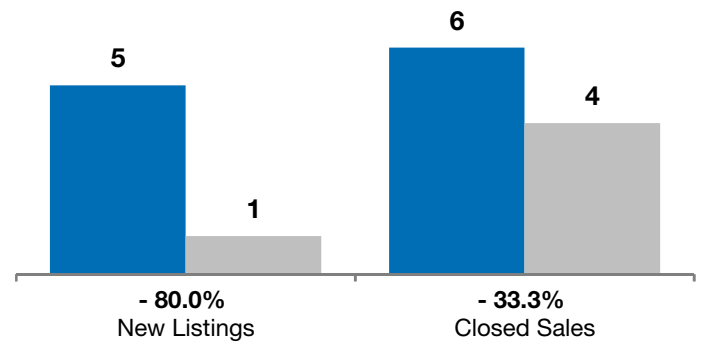
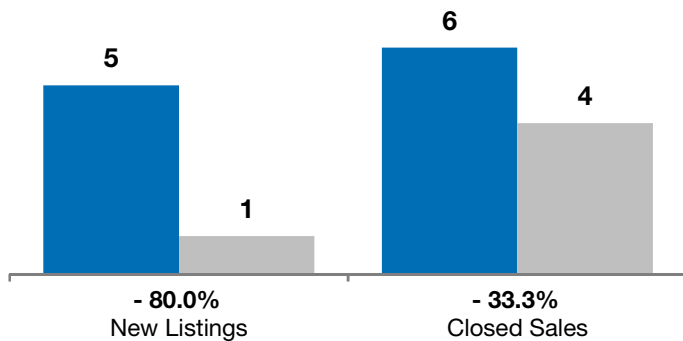
* Does not account for list prices from any previous listing contracts or seller concessions. | Activity for one month can sometimes look extreme due to small sample size.

January

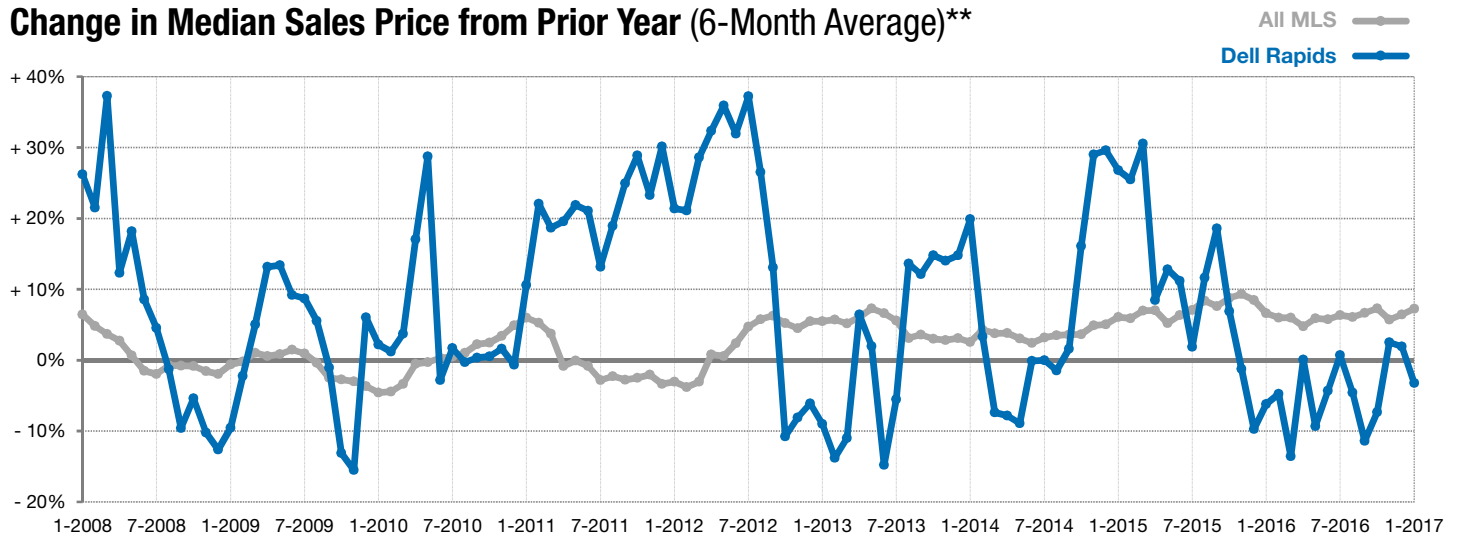
■ 2016 ■ 2017

Year to Date

■ 2016 ■ 2017



Change in Median Sales Price from Prior Year (6-Month Average)**



** Each dot represents the change in median sales price from the prior year using a 6-month weighted average. This means that each of the 6 months used in a dot are proportioned according to their share of sales during that period. | Current as of February 3, 2017. All data from RASE Multiple Listing Service. | Powered by ShowingTime 10K.