

Local Market Update – February 2017

A RESEARCH TOOL PROVIDED BY THE REALTOR® ASSOCIATION OF THE SIOUX EMPIRE, INC.



Brandon

- 30.0%

Change in
New Listings

- 30.0%

Change in
Closed Sales

- 7.4%

Change in
Median Sales Price

Minnehaha County, SD

February

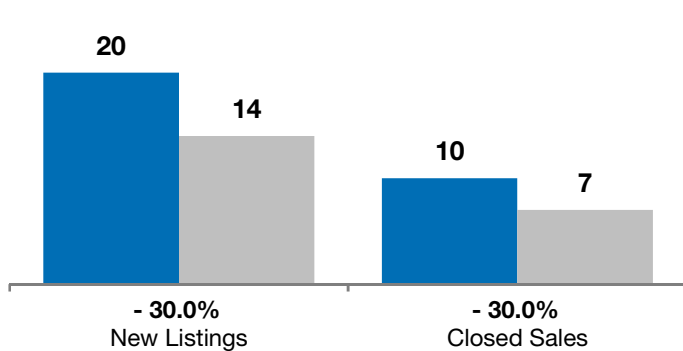
Year to Date

	2016	2017	+ / -	2016	2017	+ / -
New Listings	20	14	- 30.0%	31	32	+ 3.2%
Closed Sales	10	7	- 30.0%	17	19	+ 11.8%
Median Sales Price*	\$198,200	\$183,500	- 7.4%	\$205,000	\$184,000	- 10.2%
Average Sales Price*	\$236,712	\$194,857	- 17.7%	\$234,419	\$200,958	- 14.3%
Percent of Original List Price Received*	98.7%	98.5%	- 0.2%	98.5%	98.5%	+ 0.0%
Average Days on Market Until Sale	110	62	- 43.4%	109	72	- 34.0%
Inventory of Homes for Sale	47	27	- 42.6%	--	--	--
Months Supply of Inventory	3.0	1.6	- 47.8%	--	--	--

* Does not account for list prices from any previous listing contracts or seller concessions. | Activity for one month can sometimes look extreme due to small sample size.

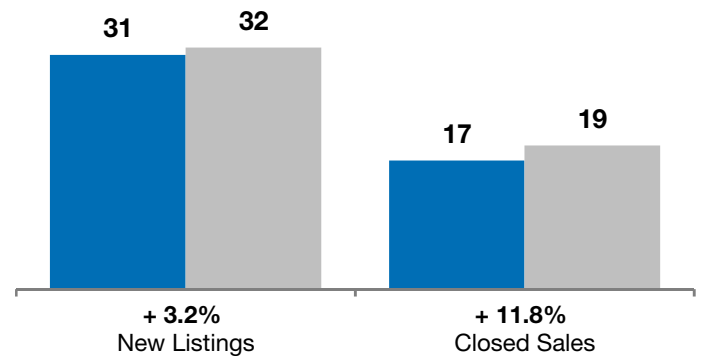
February

■ 2016 ■ 2017

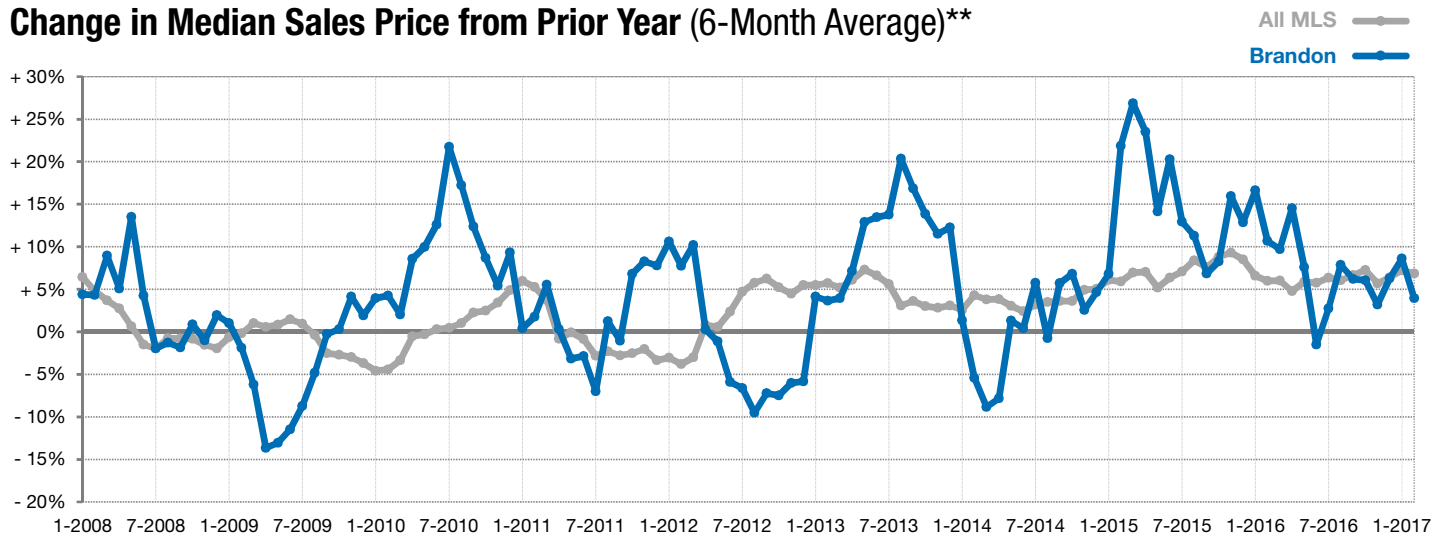


Year to Date

■ 2016 ■ 2017



Change in Median Sales Price from Prior Year (6-Month Average)**



** Each dot represents the change in median sales price from the prior year using a 6-month weighted average. This means that each of the 6 months used in a dot are proportioned according to their share of sales during that period. | Current as of March 3, 2017. All data from RASE Multiple Listing Service. | Powered by ShowingTime 10K.