

# Local Market Update – February 2017

A RESEARCH TOOL PROVIDED BY THE REALTOR® ASSOCIATION OF THE SIOUX EMPIRE, INC.



## Dell Rapids

**+ 25.0%**

Change in  
New Listings

**- 20.0%**

Change in  
Closed Sales

**- 27.8%**

Change in  
Median Sales Price

Minnehaha County, SD

### February

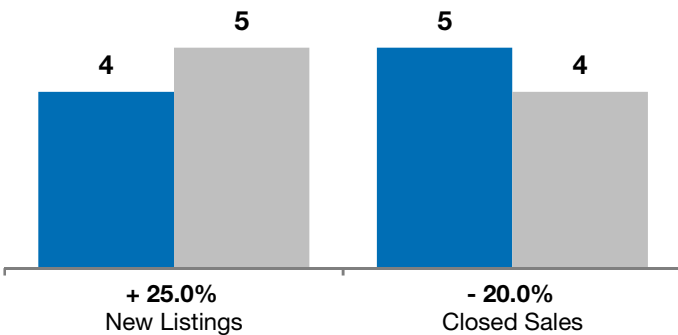
### Year to Date

	2016	2017	+ / -	2016	2017	+ / -
New Listings	4	5	+ 25.0%	9	6	- 33.3%
Closed Sales	5	4	- 20.0%	11	8	- 27.3%
Median Sales Price*	\$195,000	<b>\$140,700</b>	- 27.8%	\$174,900	<b>\$147,450</b>	- 15.7%
Average Sales Price*	\$254,240	<b>\$143,350</b>	- 43.6%	\$203,441	<b>\$146,663</b>	- 27.9%
Percent of Original List Price Received*	96.5%	<b>97.6%</b>	+ 1.1%	98.3%	<b>97.5%</b>	- 0.8%
Average Days on Market Until Sale	145	<b>102</b>	- 29.3%	140	<b>103</b>	- 26.5%
Inventory of Homes for Sale	14	<b>8</b>	- 42.9%	--	--	--
Months Supply of Inventory	2.1	<b>1.4</b>	- 34.5%	--	--	--

\* Does not account for list prices from any previous listing contracts or seller concessions. | Activity for one month can sometimes look extreme due to small sample size.

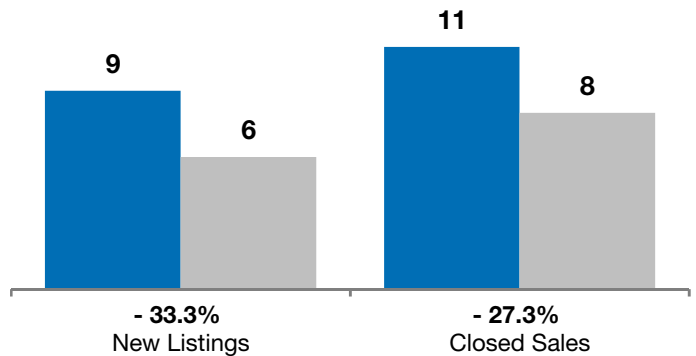
### February

■ 2016 ■ 2017

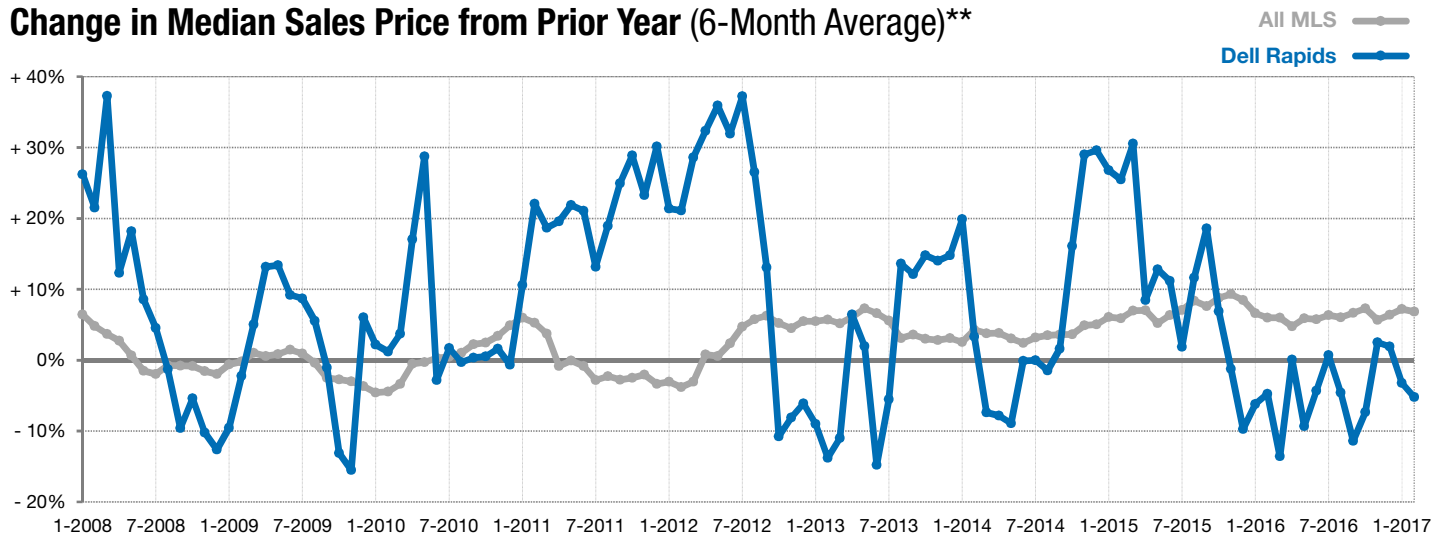


### Year to Date

■ 2016 ■ 2017



### Change in Median Sales Price from Prior Year (6-Month Average)\*\*



\*\* Each dot represents the change in median sales price from the prior year using a 6-month weighted average. This means that each of the 6 months used in a dot are proportioned according to their share of sales during that period. | Current as of March 3, 2017. All data from RASE Multiple Listing Service. | Powered by ShowingTime 10K.