

# Local Market Update – February 2017

A RESEARCH TOOL PROVIDED BY THE REALTOR® ASSOCIATION OF THE SIOUX EMPIRE, INC.



## Garretson

**- 66.7%**

Change in  
New Listings

**0.0%**

Change in  
Closed Sales

**+ 24.8%**

Change in  
Median Sales Price

Minnehaha County, SD

### February

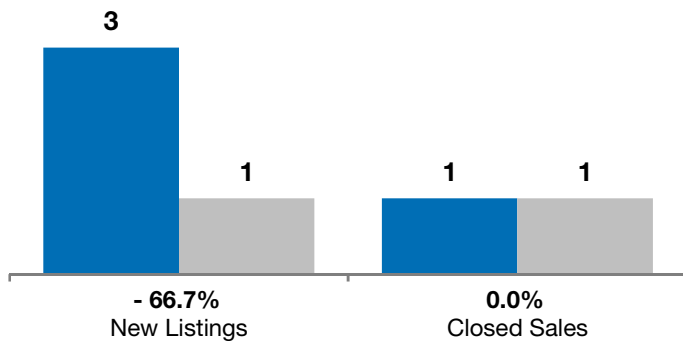
### Year to Date

	2016	2017	+ / -	2016	2017	+ / -
New Listings	3	1	- 66.7%	4	4	0.0%
Closed Sales	1	1	0.0%	2	1	- 50.0%
Median Sales Price*	\$165,399	<b>\$206,400</b>	+ 24.8%	\$282,700	<b>\$206,400</b>	- 27.0%
Average Sales Price*	\$165,399	<b>\$206,400</b>	+ 24.8%	\$282,700	<b>\$206,400</b>	- 27.0%
Percent of Original List Price Received*	94.5%	<b>100.7%</b>	+ 6.6%	94.3%	<b>100.7%</b>	+ 6.8%
Average Days on Market Until Sale	335	<b>72</b>	- 78.5%	227	<b>72</b>	- 68.3%
Inventory of Homes for Sale	7	<b>9</b>	+ 28.6%	--	--	--
Months Supply of Inventory	3.0	<b>2.4</b>	- 21.1%	--	--	--

\* Does not account for list prices from any previous listing contracts or seller concessions. | Activity for one month can sometimes look extreme due to small sample size.

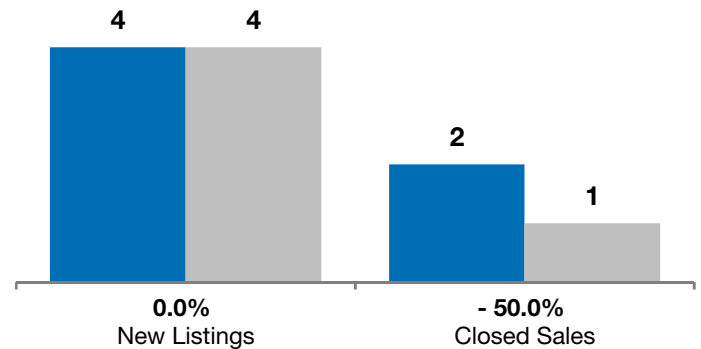
### February

■ 2016 ■ 2017

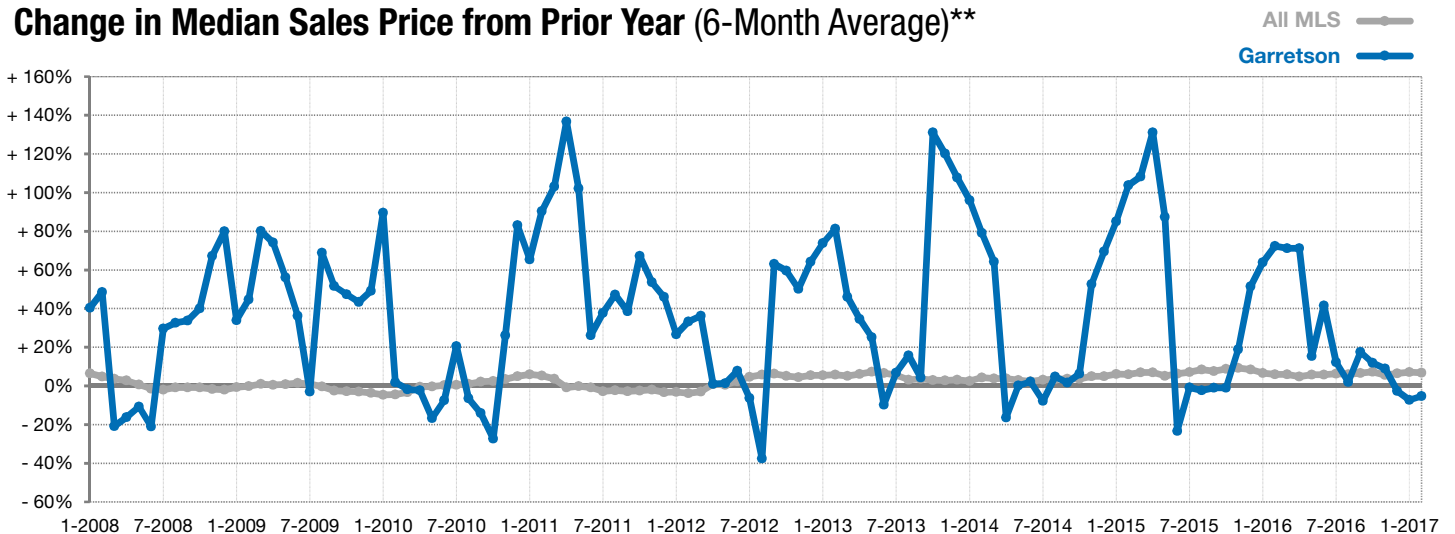


### Year to Date

■ 2016 ■ 2017



### Change in Median Sales Price from Prior Year (6-Month Average)\*\*



\*\* Each dot represents the change in median sales price from the prior year using a 6-month weighted average. This means that each of the 6 months used in a dot are proportioned according to their share of sales during that period. | Current as of March 3, 2017. All data from RASE Multiple Listing Service. | Powered by ShowingTime 10K.