

# Local Market Update – February 2017

A RESEARCH TOOL PROVIDED BY THE REALTOR® ASSOCIATION OF THE SIOUX EMPIRE, INC.



## Tea

Lincoln County, SD

**- 76.9%**      **+ 100.0%**      **- 1.0%**

Change in  
New Listings

Change in  
Closed Sales

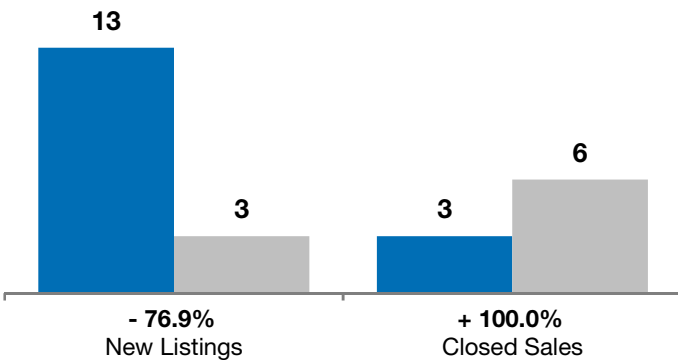
Change in  
Median Sales Price

	February			Year to Date		
	2016	2017	+ / -	2016	2017	+ / -
New Listings	13	3	- 76.9%	17	4	- 76.5%
Closed Sales	3	6	+ 100.0%	8	17	+ 112.5%
Median Sales Price*	\$240,000	<b>\$237,508</b>	- 1.0%	\$250,000	<b>\$209,900</b>	- 16.0%
Average Sales Price*	\$238,300	<b>\$251,882</b>	+ 5.7%	\$245,213	<b>\$226,488</b>	- 7.6%
Percent of Original List Price Received*	93.7%	<b>102.3%</b>	+ 9.2%	96.8%	<b>100.8%</b>	+ 4.2%
Average Days on Market Until Sale	265	<b>149</b>	- 43.9%	165	<b>98</b>	- 40.2%
Inventory of Homes for Sale	32	<b>11</b>	- 65.6%	--	--	--
Months Supply of Inventory	3.3	<b>1.0</b>	- 68.6%	--	--	--

\* Does not account for list prices from any previous listing contracts or seller concessions. | Activity for one month can sometimes look extreme due to small sample size.

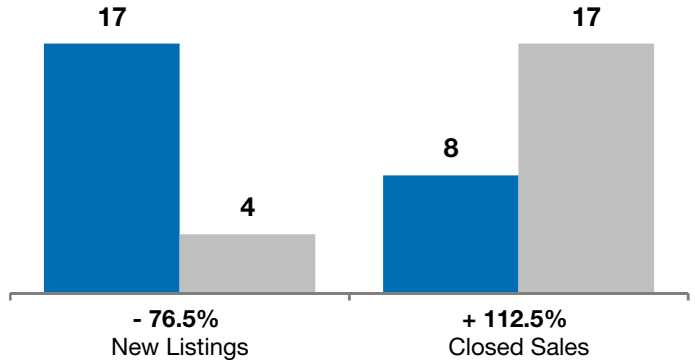
### February

■ 2016 ■ 2017

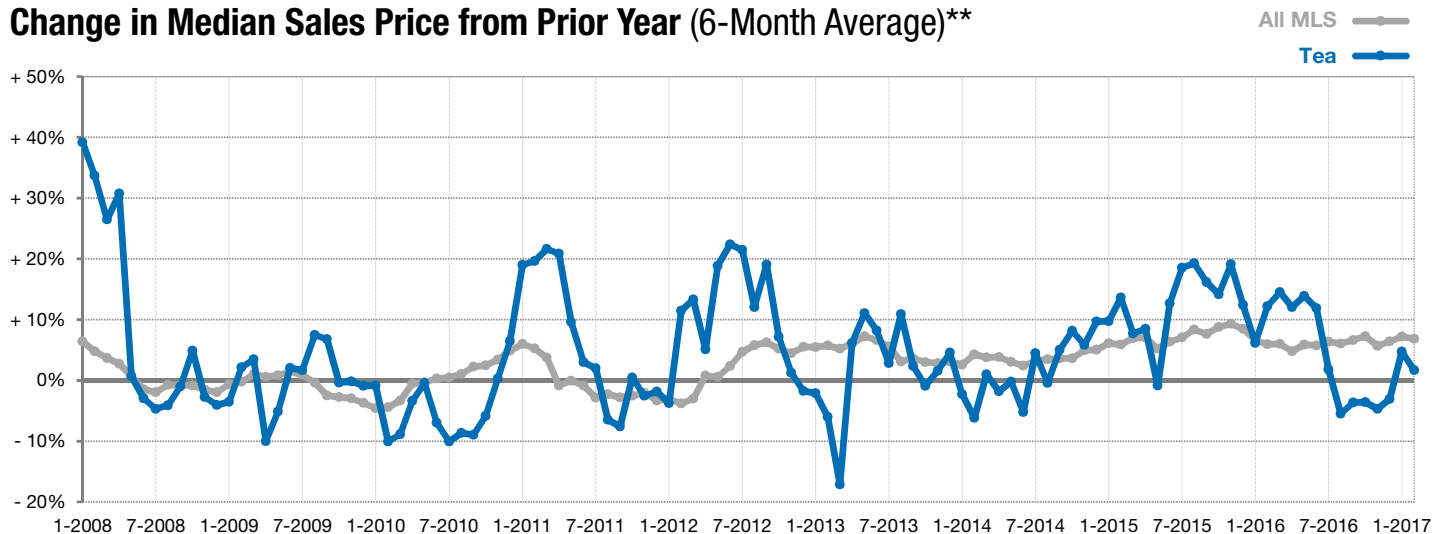


### Year to Date

■ 2016 ■ 2017



### Change in Median Sales Price from Prior Year (6-Month Average)\*\*



\*\* Each dot represents the change in median sales price from the prior year using a 6-month weighted average. This means that each of the 6 months used in a dot are proportioned according to their share of sales during that period. | Current as of March 3, 2017. All data from RASE Multiple Listing Service. | Powered by ShowingTime 10K.