

# Local Market Update – March 2017

A RESEARCH TOOL PROVIDED BY THE REALTOR® ASSOCIATION OF THE SIOUX EMPIRE, INC.



## Dell Rapids

**0.0%**

Change in  
New Listings

--

Change in  
Closed Sales

--

Change in  
Median Sales Price

Minnehaha County, SD

**March**

**Year to Date**

	2016	2017	+ / -	2016	2017	+ / -
New Listings	5	5	0.0%	14	14	0.0%
Closed Sales	0	4	--	11	13	+ 18.2%
Median Sales Price*	\$0	<b>\$163,700</b>	--	\$174,900	<b>\$154,900</b>	- 11.4%
Average Sales Price*	\$0	<b>\$156,575</b>	--	\$203,441	<b>\$148,892</b>	- 26.8%
Percent of Original List Price Received*	0.0%	<b>98.3%</b>	--	98.3%	<b>96.8%</b>	- 1.5%
Average Days on Market Until Sale	0	<b>124</b>	--	140	<b>107</b>	- 23.2%
Inventory of Homes for Sale	19	<b>15</b>	- 21.1%	--	--	--
Months Supply of Inventory	2.8	<b>2.7</b>	- 2.1%	--	--	--

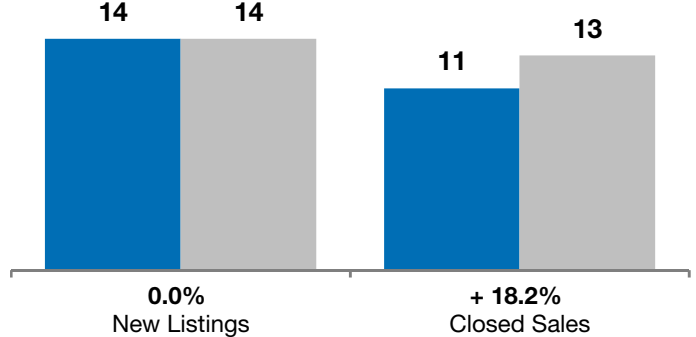
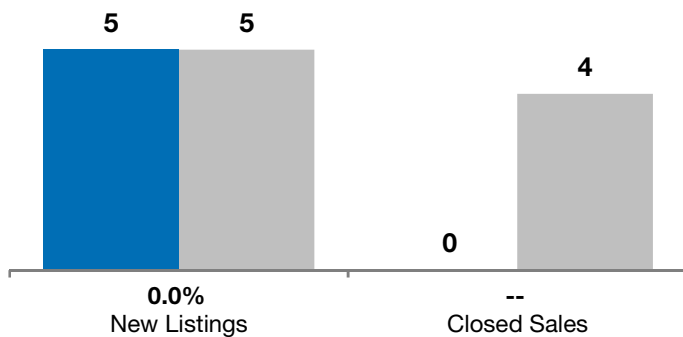
\* Does not account for list prices from any previous listing contracts or seller concessions. | Activity for one month can sometimes look extreme due to small sample size.

**March**

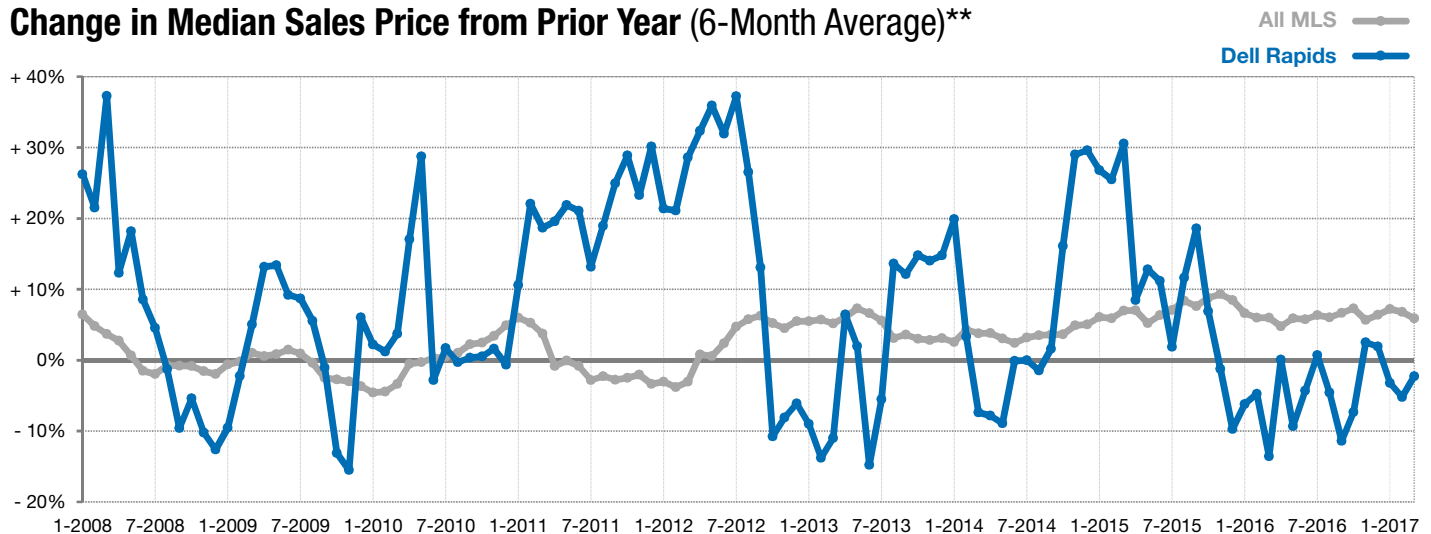
■ 2016 ■ 2017

**Year to Date**

■ 2016 ■ 2017



### Change in Median Sales Price from Prior Year (6-Month Average)\*\*



\*\* Each dot represents the change in median sales price from the prior year using a 6-month weighted average. This means that each of the 6 months used in a dot are proportioned according to their share of sales during that period. | Current as of April 5, 2017. All data from RASE Multiple Listing Service. | Powered by ShowingTime 10K.