

Local Market Update – March 2017

A RESEARCH TOOL PROVIDED BY THE REALTOR® ASSOCIATION OF THE SIOUX EMPIRE, INC.



Garretson

- 100.0%

--

--

Change in
New Listings

Change in
Closed Sales

Change in
Median Sales Price

Minnehaha County, SD

March

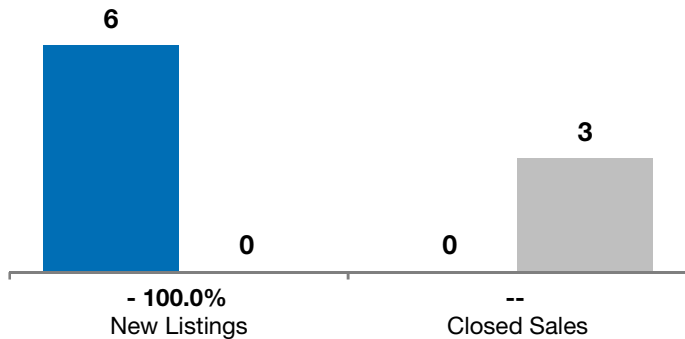
Year to Date

	2016	2017	+ / -	2016	2017	+ / -
New Listings	6	0	- 100.0%	10	4	- 60.0%
Closed Sales	0	3	--	2	5	+ 150.0%
Median Sales Price*	\$0	\$67,500	--	\$282,700	\$67,500	- 76.1%
Average Sales Price*	\$0	\$69,667	--	\$282,700	\$91,080	- 67.8%
Percent of Original List Price Received*	0.0%	91.2%	--	94.3%	90.9%	- 3.6%
Average Days on Market Until Sale	0	110	--	227	119	- 47.7%
Inventory of Homes for Sale	13	6	- 53.8%	--	--	--
Months Supply of Inventory	5.6	1.6	- 71.1%	--	--	--

* Does not account for list prices from any previous listing contracts or seller concessions. | Activity for one month can sometimes look extreme due to small sample size.

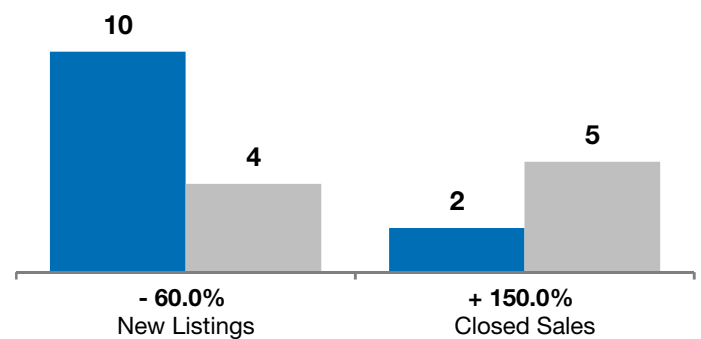
March

■ 2016 ■ 2017

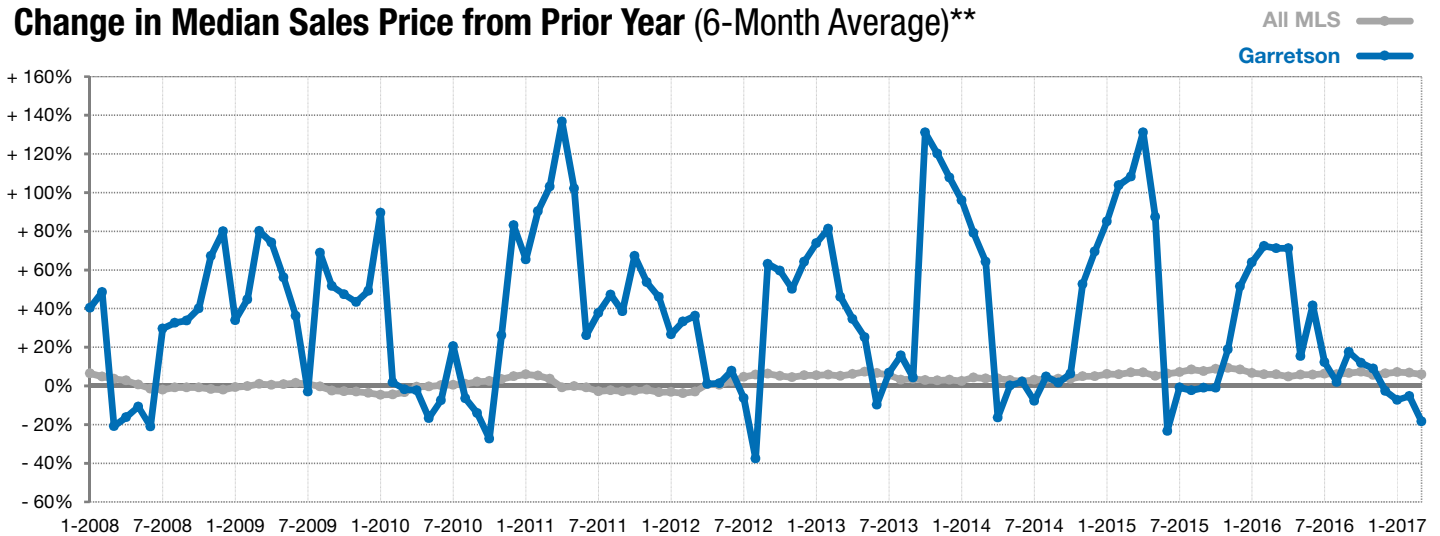


Year to Date

■ 2016 ■ 2017



Change in Median Sales Price from Prior Year (6-Month Average)**



** Each dot represents the change in median sales price from the prior year using a 6-month weighted average. This means that each of the 6 months used in a dot are proportioned according to their share of sales during that period. | Current as of April 5, 2017. All data from RASE Multiple Listing Service. | Powered by ShowingTime 10K.