

Local Market Update – March 2017

A RESEARCH TOOL PROVIDED BY THE REALTOR® ASSOCIATION OF THE SIOUX EMPIRE, INC.



Luverne

- 10.0%

Change in
New Listings

+ 100.0%

Change in
Closed Sales

+ 9.7%

Change in
Median Sales Price

Rock County, MN

March

Year to Date

	2016	2017	+ / -	2016	2017	+ / -
New Listings	10	9	- 10.0%	20	18	- 10.0%
Closed Sales	2	4	+ 100.0%	6	8	+ 33.3%
Median Sales Price*	\$134,000	\$147,000	+ 9.7%	\$134,000	\$142,750	+ 6.5%
Average Sales Price*	\$134,000	\$127,500	- 4.9%	\$130,750	\$135,063	+ 3.3%
Percent of Original List Price Received*	95.6%	95.6%	+ 0.0%	88.6%	93.4%	+ 5.4%
Average Days on Market Until Sale	272	193	- 29.0%	248	169	- 31.9%
Inventory of Homes for Sale	43	20	- 53.5%	--	--	--
Months Supply of Inventory	8.1	3.3	- 59.2%	--	--	--

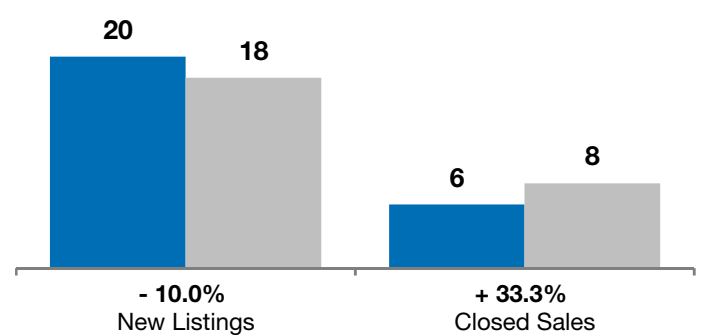
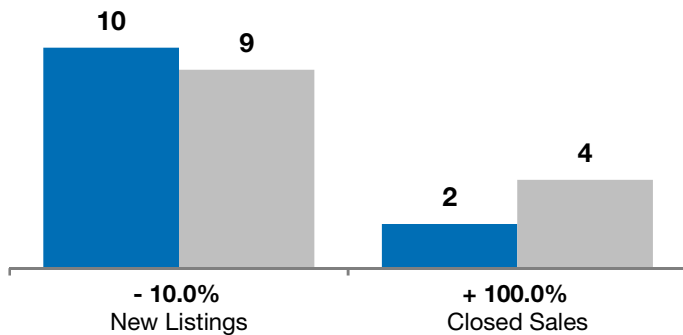
* Does not account for list prices from any previous listing contracts or seller concessions. | Activity for one month can sometimes look extreme due to small sample size.

March

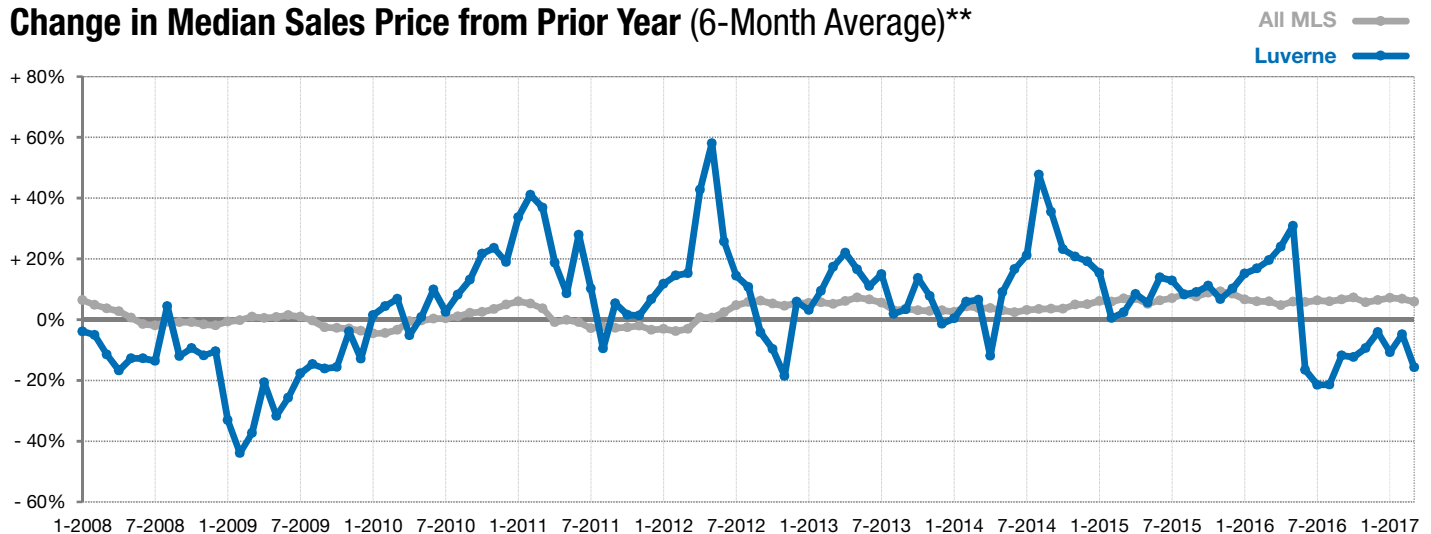
■ 2016 ■ 2017

Year to Date

■ 2016 ■ 2017



Change in Median Sales Price from Prior Year (6-Month Average)**



** Each dot represents the change in median sales price from the prior year using a 6-month weighted average. This means that each of the 6 months used in a dot are proportioned according to their share of sales during that period. | Current as of April 5, 2017. All data from RASE Multiple Listing Service. | Powered by ShowingTime 10K.