

Local Market Update – August 2017

A RESEARCH TOOL PROVIDED BY THE REALTOR® ASSOCIATION OF THE SIOUX EMPIRE, INC.



Tea

+ 33.3%

Change in
New Listings

- 30.8%

Change in
Closed Sales

- 1.4%

Change in
Median Sales Price

Lincoln County, SD

August

Year to Date

	2016	2017	+ / -	2016	2017	+ / -
New Listings	15	20	+ 33.3%	126	94	- 25.4%
Closed Sales	13	9	- 30.8%	83	64	- 22.9%
Median Sales Price*	\$208,000	\$205,000	- 1.4%	\$205,000	\$207,750	+ 1.3%
Average Sales Price*	\$221,406	\$204,561	- 7.6%	\$229,206	\$225,553	- 1.6%
Percent of Original List Price Received*	99.3%	100.6%	+ 1.3%	99.0%	100.5%	+ 1.5%
Average Days on Market Until Sale	75	61	- 19.2%	97	84	- 13.4%
Inventory of Homes for Sale	43	36	- 16.3%	--	--	--
Months Supply of Inventory	4.1	4.2	+ 1.6%	--	--	--

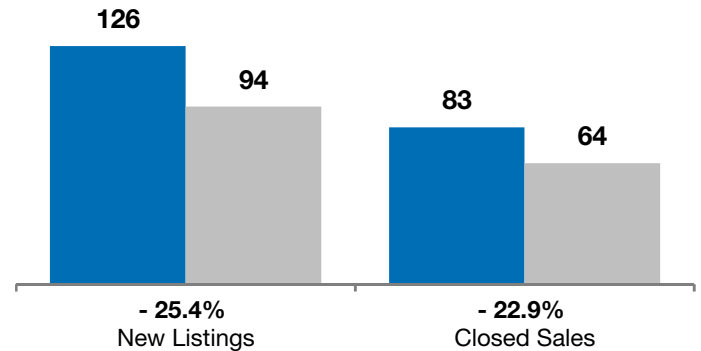
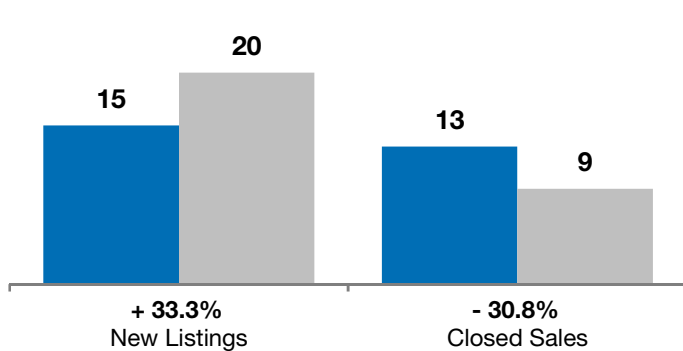
* Does not account for list prices from any previous listing contracts or seller concessions. | Activity for one month can sometimes look extreme due to small sample size.

August

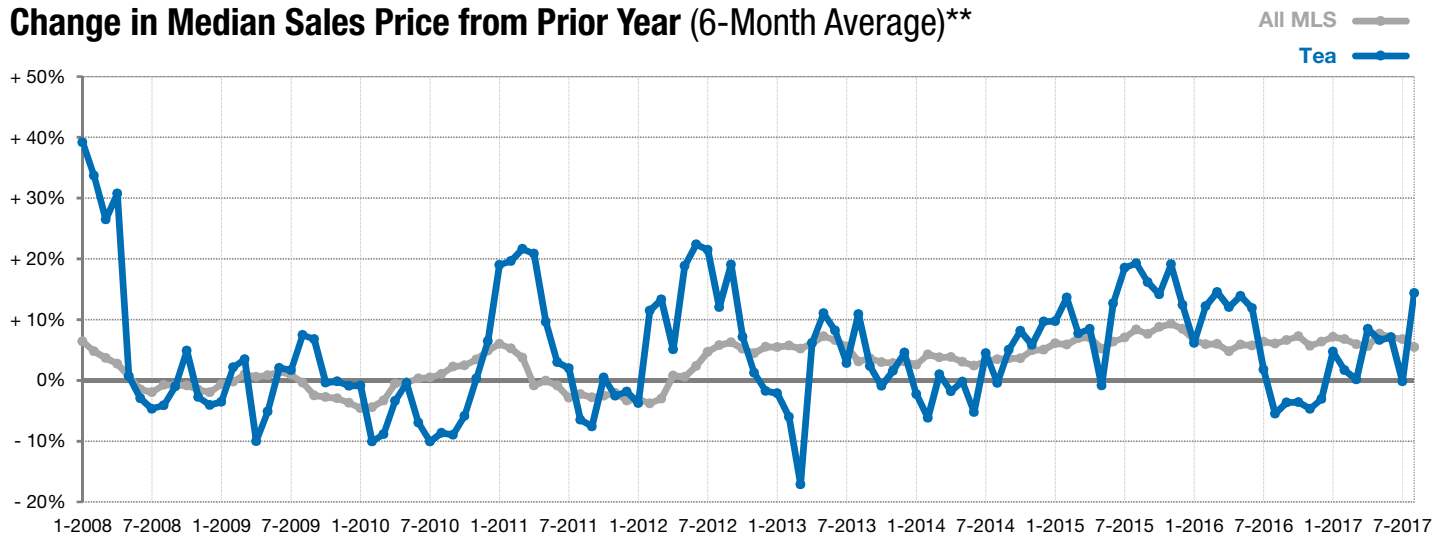
■ 2016 ■ 2017

Year to Date

■ 2016 ■ 2017



Change in Median Sales Price from Prior Year (6-Month Average)**



** Each dot represents the change in median sales price from the prior year using a 6-month weighted average. This means that each of the 6 months used in a dot are proportioned according to their share of sales during that period. | Current as of September 6, 2017. All data from RASE Multiple Listing Service. | Powered by ShowingTime 10K.