

# Local Market Update – September 2017

A RESEARCH TOOL PROVIDED BY THE REALTOR® ASSOCIATION OF THE SIOUX EMPIRE, INC.



## Tea

**+ 33.3%**

Change in  
New Listings

**- 30.8%**

Change in  
Closed Sales

**- 1.4%**

Change in  
Median Sales Price

Lincoln County, SD

### September

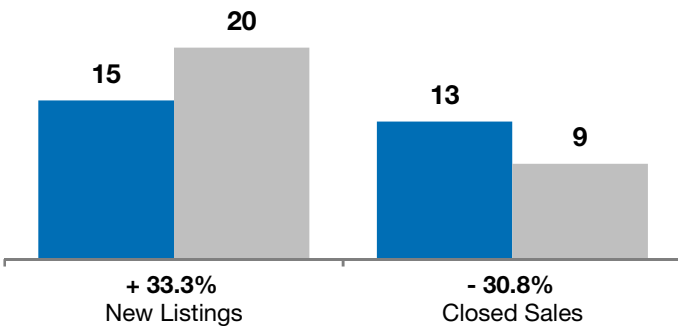
### Year to Date

	2016	2017	+ / -	2016	2017	+ / -
New Listings	15	20	+ 33.3%	126	94	- 25.4%
Closed Sales	13	9	- 30.8%	83	64	- 22.9%
Median Sales Price*	\$208,000	\$205,000	- 1.4%	\$205,000	\$207,750	+ 1.3%
Average Sales Price*	\$221,406	\$204,561	- 7.6%	\$229,206	\$225,553	- 1.6%
Percent of Original List Price Received*	99.3%	100.6%	+ 1.3%	99.0%	100.5%	+ 1.5%
Average Days on Market Until Sale	75	61	- 19.2%	97	84	- 13.4%
Inventory of Homes for Sale	43	38	- 11.6%	--	--	--
Months Supply of Inventory	4.1	4.5	+ 9.4%	--	--	--

\* Does not account for list prices from any previous listing contracts or seller concessions. | Activity for one month can sometimes look extreme due to small sample size.

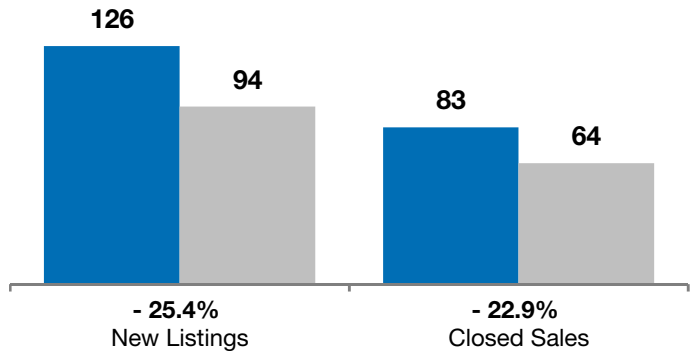
### September

■ 2016 ■ 2017

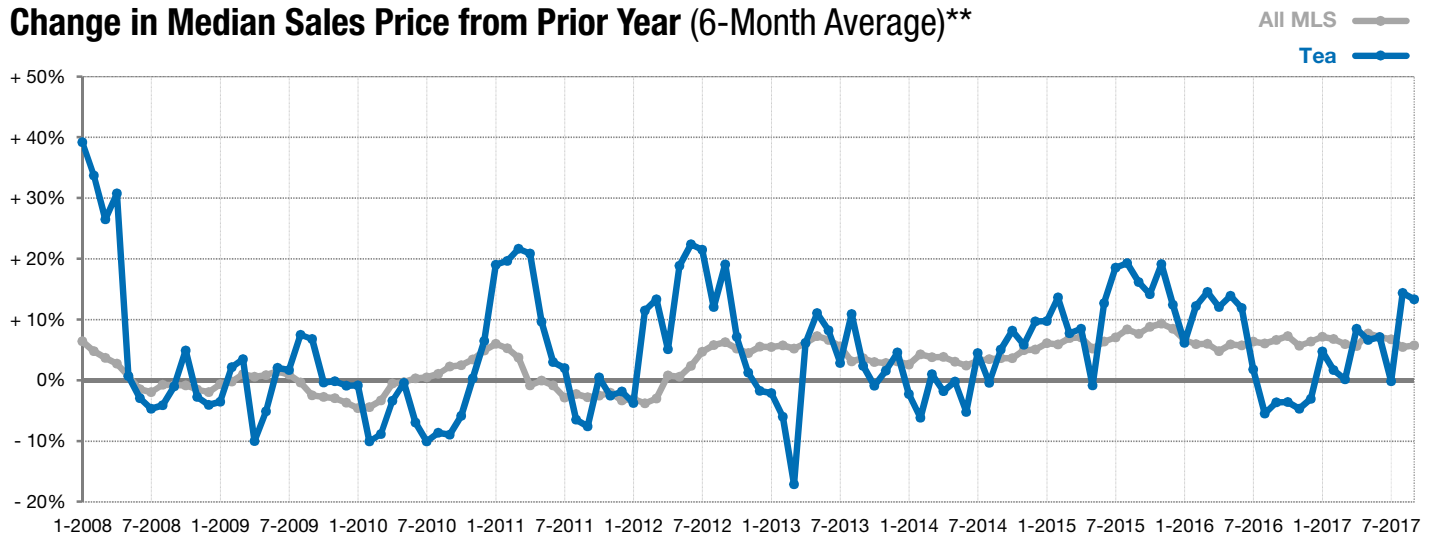


### Year to Date

■ 2016 ■ 2017



### Change in Median Sales Price from Prior Year (6-Month Average)\*\*



\*\* Each dot represents the change in median sales price from the prior year using a 6-month weighted average. This means that each of the 6 months used in a dot are proportioned according to their share of sales during that period. | Current as of October 4, 2017. All data from RASE Multiple Listing Service. | Powered by ShowingTime 10K.