

# Local Market Update – November 2017

A RESEARCH TOOL PROVIDED BY THE REALTOR® ASSOCIATION OF THE SIOUX EMPIRE, INC.



## Dell Rapids

Minnehaha County, SD

**- 12.5%**

Change in  
New Listings

**- 85.7%**

Change in  
Closed Sales

**+ 28.6%**

Change in  
Median Sales Price

### November

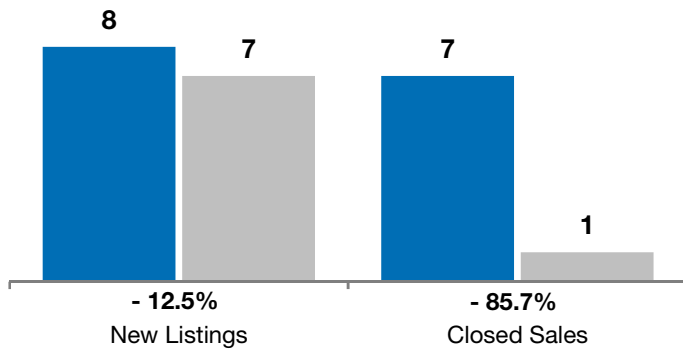
### Year to Date

	2016	2017	+ / -	2016	2017	+ / -
New Listings	8	7	- 12.5%	78	80	+ 2.6%
Closed Sales	7	1	- 85.7%	60	50	- 16.7%
Median Sales Price*	\$140,000	<b>\$180,000</b>	+ 28.6%	\$162,000	<b>\$159,950</b>	- 1.3%
Average Sales Price*	\$187,429	<b>\$180,000</b>	- 4.0%	\$185,562	<b>\$171,363</b>	- 7.7%
Percent of Original List Price Received*	96.2%	<b>97.3%</b>	+ 1.2%	98.9%	<b>97.2%</b>	- 1.7%
Average Days on Market Until Sale	84	<b>71</b>	- 15.3%	96	<b>85</b>	- 11.2%
Inventory of Homes for Sale	18	<b>23</b>	+ 27.8%	--	--	--
Months Supply of Inventory	3.0	<b>5.0</b>	+ 64.7%	--	--	--

\* Does not account for list prices from any previous listing contracts or seller concessions. | Activity for one month can sometimes look extreme due to small sample size.

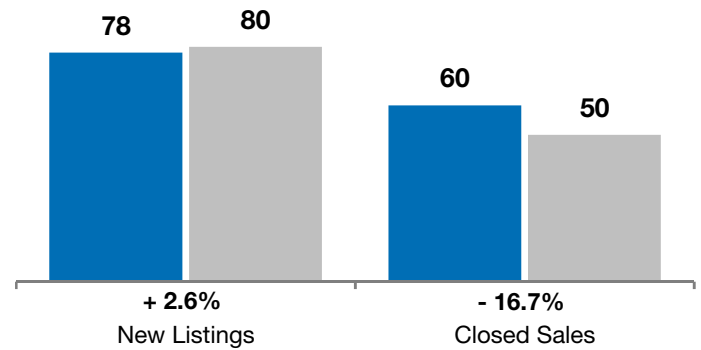
### November

■ 2016 ■ 2017

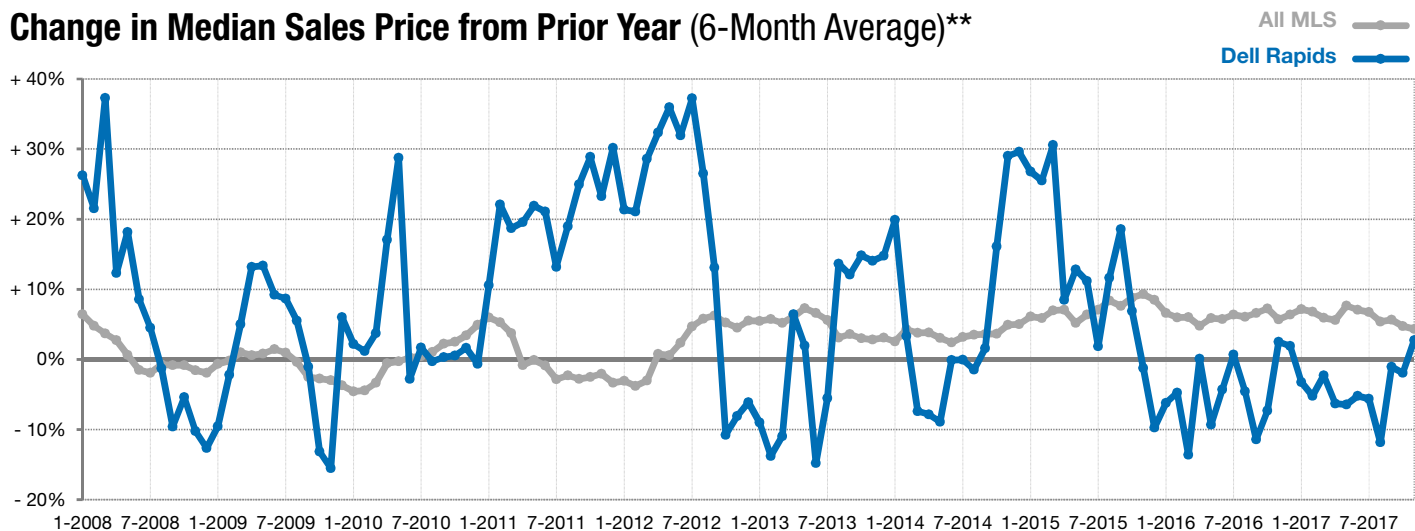


### Year to Date

■ 2016 ■ 2017



### Change in Median Sales Price from Prior Year (6-Month Average)\*\*



\*\* Each dot represents the change in median sales price from the prior year using a 6-month weighted average. This means that each of the 6 months used in a dot are proportioned according to their share of sales during that period.