

# Local Market Update – February 2021

A RESEARCH TOOL PROVIDED BY THE REALTOR® ASSOCIATION OF THE SIOUX EMPIRE, INC.



## Dell Rapids

**- 28.6%**

**+ 33.3%**

**+ 87.0%**

Change in  
New Listings

Change in  
Closed Sales

Change in  
Median Sales Price

Minnehaha County, SD

### February

### Year to Date

	2020	2021	+ / -	2020	2021	+ / -
New Listings	7	5	- 28.6%	12	7	- 41.7%
Closed Sales	3	4	+ 33.3%	7	9	+ 28.6%
Median Sales Price*	\$220,000	<b>\$411,500</b>	+ 87.0%	\$203,900	<b>\$182,000</b>	- 10.7%
Average Sales Price*	\$252,500	<b>\$463,225</b>	+ 83.5%	\$206,257	<b>\$326,878</b>	+ 58.5%
Percent of Original List Price Received*	99.6%	<b>101.0%</b>	+ 1.5%	97.2%	<b>103.8%</b>	+ 6.9%
Average Days on Market Until Sale	92	<b>168</b>	+ 82.6%	80	<b>195</b>	+ 144.5%
Inventory of Homes for Sale	24	7	- 70.8%	--	--	--
Months Supply of Inventory	3.7	<b>1.3</b>	- 66.5%	--	--	--

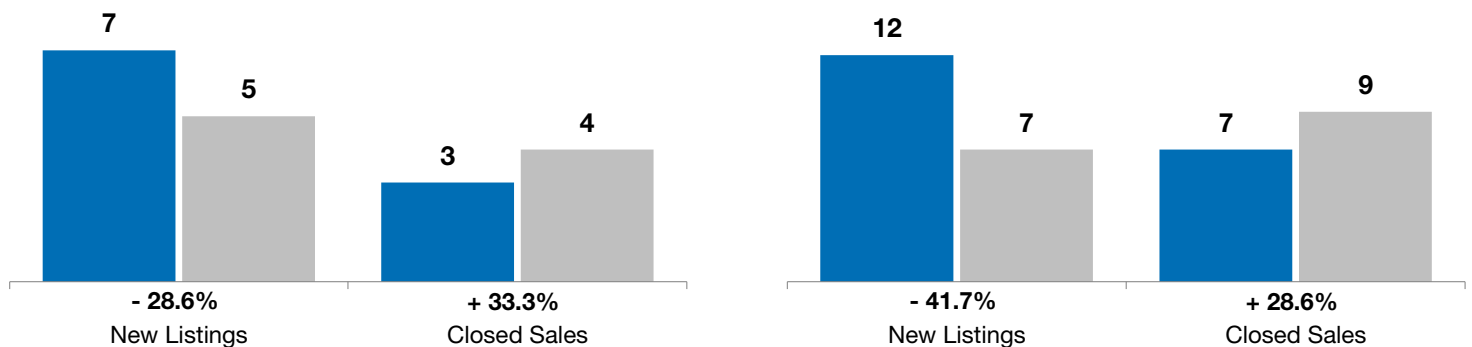
\* Does not account for list prices from any previous listing contracts or seller concessions. | Activity for one month can sometimes look extreme due to small sample size.

### February

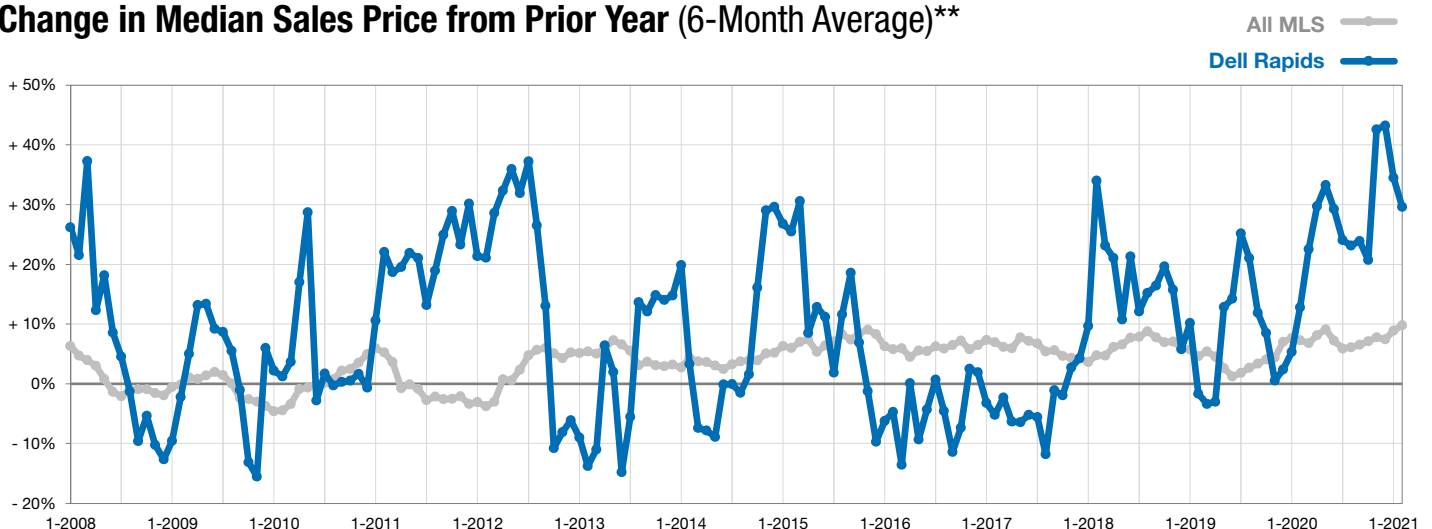
■ 2020 ■ 2021

### Year to Date

■ 2020 ■ 2021



### Change in Median Sales Price from Prior Year (6-Month Average)\*\*



\*\* Each dot represents the change in median sales price from the prior year using a 6-month weighted average. This means that each of the 6 months used in a dot are proportioned according to their share of sales during that period.